



**CENTRAL
HAWKE'S BAY**
DISTRICT COUNCIL

together we thrive

Hear about
our plans for
the 2019/20
years!

Give us your
thoughts
on our
Draft Environmental
Strategy and more!

Bringing Thrive Alive!

Annual Plan 2019/20 Consultation Document

E ora ngātahi ana! Together we Thrive!

We've

Kia ora Central Hawke's Bay!

In November 2016 we embarked on a bold and ambitious new journey as a Council and community to create a new vision for Central Hawke's Bay – Together we Thrive!

Together we are bringing Thrive alive!

This Annual Plan reflects on only some of the things we said we would do – and have delivered on, and our areas of focus for the coming year. As a Council, we remain focused on delivering on our bold plans to create a community where we have got the basics right, while also creating an environment for social and economic growth.

In the development of #thebigwaterstory, we heard overwhelmingly that water – whether reliability to sustain business or home, is critical to support our District. In this year's Annual Plan, we are proposing funds to support our community in what we are coining #the even bigger water story to support water resilience options for Central Hawke's Bay. We anticipate our funding will be the basis to support other funding opportunities for the District, including the Provincial Growth Fund.

We also want to hear your feedback on the community's Environmental Strategy – a major priority project identified from Project Thrive. This strategy suggests how together we can collectively improve our environmental footprint and enhance our patch of Central Hawke's Bay paradise.

The impact of new rating valuations received in late 2018 has been very much front of mind in the development of this plan. While new property values are a reflection of the true value of Central Hawke's Bay being recognised, the changes for some have dramatically changed how rates are apportioned across the District. While Council is unfortunately limited in how rates are apportioned as a result of the new values, we are however proposing a major rating review to ensure rates are spread as equitably as possible in 2020.

This year's rates are very close to what we proposed in the 2018 Long Term Plan – a success for a District with very limited funding sources and many challenges ahead requiring bold leadership. **Together we Thrive – so please share your thoughts with us.**



Alex Walker

Alex Walker

Mayor of Central Hawke's Bay



Monique Davidson

Monique Davidson

Chief Executive Officer

Waipawa and Districts Centennial Memorial Pool

Following the failure of the pool in 2017, the community rallied and the Waipawa and Districts Pool Project was included in Council's 2018 Long Term Plan. \$650,000 was contributed by Council to the \$1.185 million project, with a Community Project Group doing a stellar job fundraising the \$550,000 balance.

With the pool being delayed while being shipped from Italy, Christmas came late with the new Pool being opened in March 2019.

District Plan Review

The review of the current District Plan – over 20 years old was a major priority for the new Council, following the completion of Project Thrive. Council set an ambitious target to adopt a draft plan on 31 October 2018. Council achieved what it said it would do, adopting the substantially complete draft on 31 October.

In December, Council confirmed a programme for consultation to commence with the community in May/June 2019 on the new Draft District Plan.

been busy this year

delivering on the outcomes of Project Thrive!

Some of the highlights of this year include:

Opening of the Centralines Multisport Turf

With the huge support of the community, the Central Hawke's Bay Community Trust opened the Sports Turf in November 2018. This multi-million dollar project is an outstanding facility for Central Hawke's Bay, with Council providing \$200,000 and lots of other in-kind support to the project.



Weather Events

Multiple major weather events in September and December caused major damage and disruption to the community with over \$5.7 million in damage to the roading network being caused. Ongoing major repairs have kept our roading team busy through the year.

Economic Development and Provincial Growth Fund

In late 2018 we appointed our first dedicated Economic Development Role for Central Hawke's Bay. We also submitted applications to the Government's Provincial Growth Fund to identify our economic potential and to support Central Hawke's Bay to fully participate in the Fund.



New and Strengthened Contracting Partners

In 2018 we welcomed new Strategic Partners – Smart Environmental, Stantech and a joint venture of Recreational Services and Veolia to the Central Hawke's Bay Whanau. We also strengthened our existing partnerships with Higgins and road maintenance contractor Downer.

New and strengthened contracting partnerships has allowed us to work together across our contracts and to think smarter to support the outcomes of Project Thrive!

Wastewater Review

This year we have made big in-roads to reducing challenges with managing odour and Hawke's Bay Regional Council requirements at our Wastewater treatment Plants. The Community Reference Group and Technical Reference Group have been working together to continue the required review of the Waipawa and Waipukurau Wastewater treatment plants and Otane has now been added to the review. We are working to have options identified by April 2019.

#the BIG Water Story

Launch of the #The Big Water Story

In August we launched #thebigwaterstory, a ten-year investment plan in our water, stormwater and wastewater infrastructure for Central Hawke's Bay. Investing to provide safe and clean drinking water and reliable and cost effective waste and storm water services was a key message heard through Project THRIVE.

Having your say is easy!

Let us know your thoughts on our priorities and plans for the 2019/20 by visiting www.chbdc.govt.nz or making a submission.

We've got big plans!

Our big focus for the 2019/20 year includes the following:



District Plan Review

Our focus remains on the completion of the District Plan – a major driver of change to deliver on the outcomes of Project Thrive!

With the current plan over 20 years old, the new plan reflects the aspirations of a future Central Hawke's Bay District.

In May/June, conversations and consultation on the Draft Plan will commence with the community, this project being a major driver to support a Thriving Central Hawke's Bay!



Economic Development

A major focus for Council is growing the social and economic wellbeing of Central Hawke's Bay.

Relative to our success from our applications to the Government's Provincial Growth Fund, we anticipate this year will be a major year for setting the Districts economic foundations for the future.

The development of an Economic Development Strategy, will be informed from work funding is sought for from the Provincial Growth Fund, to identify opportunities to enhance the economic and social wellbeing of our community.



Community Planning

The 2019/20 year will see the substantial delivery of the community planning programme. In the 2018/19 year we began the Community Planning programme with the communities of Otane and Takapau.

In the 2019/20 year we plan to support the communities of Ongaonga, Porangahau and Tikokino to deliver their community plans.

Our focus also turns this year to Town Centre Planning, with planning in Waipawa beginning this year and planning for Waipukurau in the 2020 year.

Māori Engagement

Council recognises the special role Māori play in the history and future of Central Hawke's Bay.

Over the coming years Council has identified building stronger partnerships with Iwi, Hapū and Marae across Tamatea as a priority to ensure our whole community thrives. Over the next year Council will be turning their attention to working closer with Te Taiwhenua o Tamatea, Marae and Post Treaty settlement groups to assist Council in enhancing Māori engagement.



Wastewater Progress

Wastewater continues to be a major focus for this Council.

We will continue working with the community and our experts to arrive at our best practicable option by mid 2019, as required by our Environment Court Order and agreement with Hawke’s Bay Regional Council. The Otane Waste Water Plant was included in the project scope after a review of the planned upgrade at Otane and is now in the final stages of the consent extension process.

Council will also shortly be undertaking a review of the wastewater network in Otane as it plans to reduce the amount of infiltration and ingress (I&I) volume into the wastewater system and pond.

In 2019 Council will begin the renewal of 2200m of the 375mm trunk sewer gravity main in Waipawa. This will be a two year project and is the part of the #bigwaterstory capital included in the Long Term Plan.

This work will reduce I&I and improve the performance in the wastewater network during storm events and reduce the amount of unnecessary groundwater the wastewater pond has to receive and treat.

Rating Review

We intend to undertake a major rating review during the 2019/20 year.

This will be the first major rating review for the District in over ten years to carefully consider the way rates are apportioned and distributed through the Community.

As part of the review we will be consulting with the community about the changes and intend that the outcome of the review is the basis for rating in 2020/21.

Solid Waste Minimisation Plan

This year we will also be looking to review our solid waste minimisation plan (SWMMP) following an initial review in 2018.

This major review will complement the Districts new Environmental Strategy, to ensure a co-ordinated approach to minimising our communities waste and enhancing our natural environment occurs.

#theBigWaterStory

In 2019/20 the big work begins on #thebigwaterstory projects. This includes a number of projects that have been in the planning stages in the 2018/2019 years.

Improvements to the Takapau and Porangahau water treatment plants, will focus on removing manganese and iron at both plants, and reducing hardness in Porangahau. Storage capabilities will also be reviewed at both plants. Council intends to commence work mid 2019 with a view for work to be completed by October 2019.

Council will also be concentrating on progressing two flagship projects through 2019 being the Otane and Waipukurau alternate and second water supplies. Both of these projects involve lengthy pipeline builds with varying complexities and will commence in 2019 through 2020 with an expected completion in 2021.

Council will also continue an ongoing seven year programme of targeted firefighting and improvements in low pressure reticulation areas in Waipukurau in 2019.

This programme will start in 2018/19 and will support our ability to grow the networks in the future and add more resilience to the networks.

Tell us your thoughts?

We're proposing four changes from our 2018 Long Term Plan:

1. #the even bigger water story

Water storage has been a focus of much discussion and energy in Central Hawke's Bay for several years now. The reality is that the Ruataniwha Water Storage Scheme as we have understood it, is unlikely. We now need to invest our energy and resources into finding water security solutions which seek to balance the impact we have on the Tukituki catchment, with security of water not just for social and economic reasons, but with the health and sustainability of the river and aquifer at the centre of our decisions.

What we do know is that water security, in some form is critical for the future of Central Hawke's Bay. What form this takes needs some further work.

Central Hawke's Bay District Council wants to hear your feedback on how as a Council we can keep the prospects of water storage alive in Central Hawke's Bay.

Council is proposing to allocate \$250,000 from the Rural Ward Funds to work specifically with Water Holdings CHB Ltd and other key stakeholders to determine feasible water storage options for Central Hawke's Bay.

Given the high public interest that water storage to date has received, Council are choosing to consult with the public on your thoughts about providing the suspensory load.

How will we commercially structure it?

Water Holdings CHB Ltd is a Limited Liability company set up to purchase the Intellectual Property (IP) for the Ruataniwha Water Storage Scheme from Hawke's Bay Regional Council Investment Company. The entity, while a private business, promotes itself as being not for profit from the assets which have been purchased. Water Holdings CHB Ltd is split between six shareholders Hugh Ritchie, Gavin Streeter, Tim Gilbertson, Bruce Stephenson, Bruce Worsnop and Arthur Rowlands. In addition to the shareholders, Water Holdings CHB Ltd Board of Directors has an independent Chair Angus Mabin.

We are seeking your feedback on the proposition that Council provides a \$250,000 suspensory loan to Water Holdings CHB Ltd. A suspensory loan is a non-repayable loan, that is dispensed over time or upon the completion of a set of agreed outputs. A suspensory loan normally is not repayable, however there can be mechanisms whereby repayment can be required. In the instance of the investment being proposed, this could include Water Holdings CHB Ltd commercialisation of the IP or the sale, divestment or transfer of IP or the company who holds the IP. Should Council proceed with the suspensory loan, key terms and conditions would need to be agreed.

What will the money achieve?

This project seeks to support Water Holdings CHB Ltd and key stakeholders to further assess the IP of the Ruataniwha Water Storage Scheme to explore and produce workable options to achieve water security for inter-generational economic, social and environmental resilience of Central Hawke's Bay.

The proposed money would support Water Holdings CHB Ltd to investigate existing Intellectual Property and work in a collaborative way with Te Taiwhenua o Tamatea, Hawke's Bay Regional Council and other key stakeholders to determine a solutions package for sustainable and reliable summer water supply both in Central Hawke's Bay Ruataniwha Plains and the lower Tukituki catchment.

How will this affect my rates?

The good news is that the proposed suspensory loan will not affect your rates. Council are proposing that this suspensory loan is funded out of the Rural Ward Fund which has a current balance of \$811,114. By drawing on the reserve fund no further impact on rates are required.

For more information about what is proposed refer to the Discussion Document, included in the supporting documentation which can be found on Council's website www.chbdc.govt.nz



2. Revenue and Financing Policy

Council has considered the impact of the latest three yearly rating valuations on the incidence of rating across the district and has proposed a minor variation to the Revenue and Financing Policy.

Following the requirement to review the overall impact of the allocation of rates on the community, the Leadership, Governance and Consultation activity has been included as part of the General Rate rather than the Uniform Annual General Charge.

A full Statement of Proposal is included with the Supporting Information for the Annual Plan Consultation at www.chbdc.govt.nz

3. Disaster Relief Fund Trust

The Hawke's Bay Civil Defence Emergency Management (CDEM) Group is a collective of the five Hawke's Bay local authorities required under the CDEM Act 2002 to govern and manage CDEM within the region.

The approved CDEM Group Plan seeks to establish a Hawke's Bay Disaster Relief Trust with the objective of collecting and distributing donations made by the public and organisations to assist people affected by a civil defence emergency in Hawke's Bay. Establishing the Trust will enable us to put in place the mechanisms to immediately seek and administer donations as a charity before a disaster occurs. This will allow for donated funds to be distributed as quickly as possible to those most in need.

The funds that would be placed in the Trust are not Council funds, nor are they funds that would otherwise be coming to the Council.

As the Trustees will need to be appointed by the Hawke's Bay Councils, it is necessary to establish a Council Controlled Organisation under the Local Government Act to form and administer the Trust. There is no rates impact for the establishment of the trust.



4. Draft Environmental Strategy

Project THRIVE highlighted how passionate our community is about protecting our piece of Central Hawke's Bay paradise.

We listened, and in response have developed an Environmental and Sustainability Strategy, which we included as a project in the 2018-28 Long Term Plan.

The Strategy has been developed to reduce Central Hawke's Bays' environmental footprint and to protect and enhance the environment so that it can sustain future generations. Council has been undertaking research, working alongside a Community Environmental and Sustainability Reference Group and developing ideas gathered in Project THRIVE to identify the following vision for the future.

By 2023 Central Hawke's Bay community will be recognised as successful environmental guardians, protecting and enhancing the environment so that future generations can THRIVE here.

Protecting the environment and acting sustainably means many things to Council and to the community, among these as top priorities are;

- Managing our impact on waterways
- Increasing recycling and reducing waste to landfill
- Conserving water
- Managing for climate change

Council recognises that no single organisation can bring about a healthy environment on its own. We take our responsibility seriously and have pledged to work alongside others to reduce the environmental footprint of the District.

We have a draft strategy including suggested actions to ensure our vision becomes reality. It's important to us we take our community along with us on this project, as it's going to take a whole of community effort to make change. Council is not proposing to spend any additional money on implementing this Strategy, so there won't be any impact on rates. However, we are looking to change some of the way's we do business and may need to change the priority of our existing funding. To ensure we are successful we will need help from you, our community, and partners to assist us.

Please check out the full Strategy and tell us what you think!

- Do you think we have this about right?
- How can we best work together on actions?
- What change would you most like to see happen?

What does this mean for Rates?

We continue to work towards delivering the capital projects and levels of service outlined in the Long Term Plan.

The Annual Plan includes an overall rates increase of 4.36% which is an increase on the 4.04% forecast for 2019/20 year in the 2018-28 Long Term Plan. The 0.32% increase is the combination of:

- An increase in the expected inflation rate for Councils from 2.2% in the Long Term Plan to 3.3%
- Reduction in internal interest rates to better alignment external and internal interest rates following the maturity of older debt.
- Continuing to look for more innovative ways to deliver our services and work collaboratively with our strategic contract partners.

Revaluation

Every Council must complete a revaluation of all properties in its area at least every three years. Central Hawke's Bay was revalued on 1 September 2018 and the new valuations are used for the rating from 1 July 2019. This Annual Plan will be the first year the new valuations are used. Council has considered the impact of the new valuations on the distribution of rates across the district and has included a minor variation to the Revenue and Financing Policy. The apportionment and distribution of rates will be full considered during the Rating Review that will be conducted over the following year. The adjustment to the Revenue and Financing Policy is being consulted on as part of this document.

Every **\$10** collected is allocated to these services

This graphic shows the range of services that the 2019/20 rates will go towards. Many of them you use daily without thinking. In total, rates make up about 65% of the Council's annual income.



33¢
Stormwater



14¢
Compliance & Monitoring



71¢
Solid Waste



14¢
Public Toilets



24¢
Economic & Social Development



\$1.62
Wastewater (Sewerage)



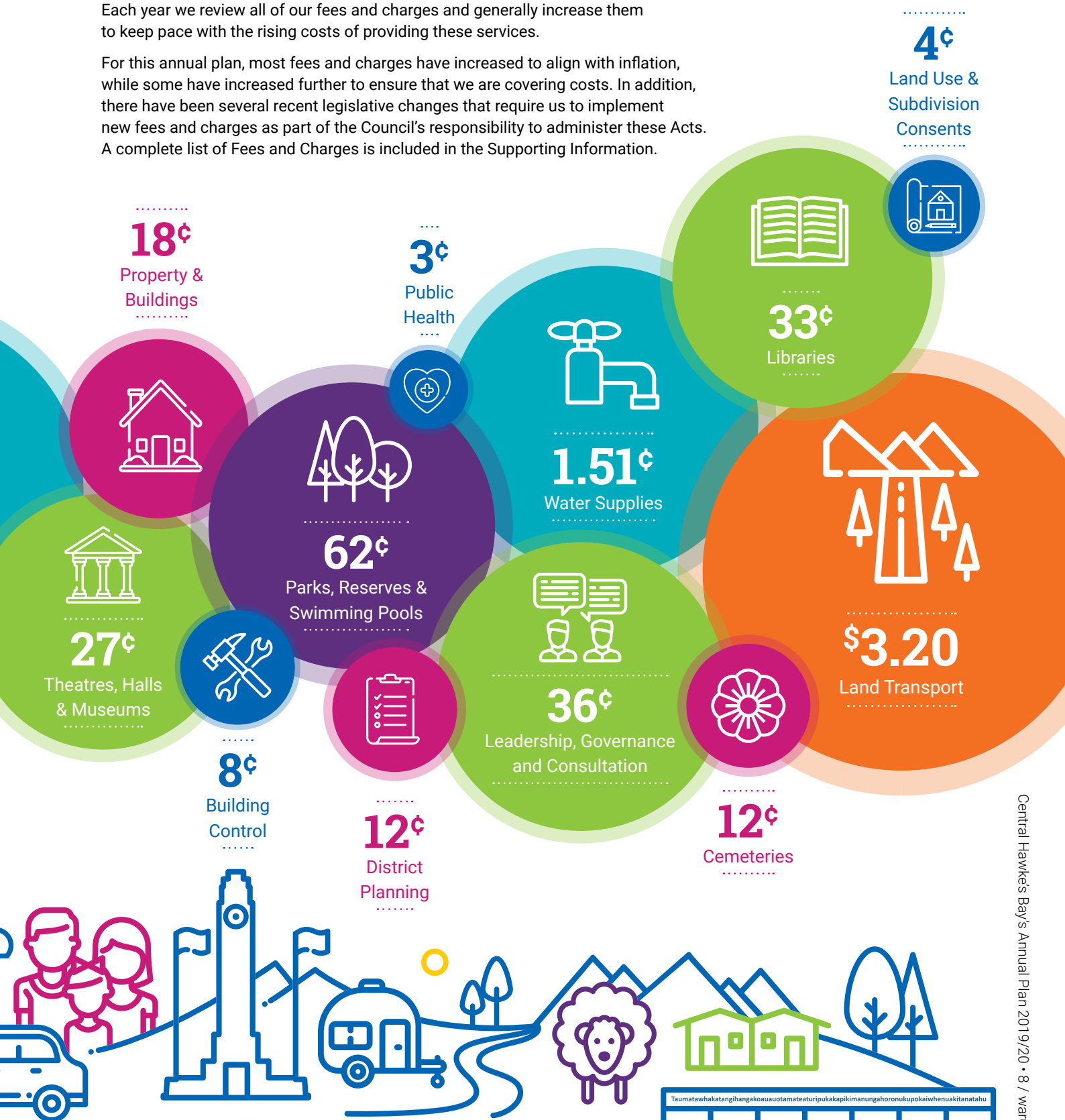
3¢
Animal Control



Fees and Charges

Each year we review all of our fees and charges and generally increase them to keep pace with the rising costs of providing these services.

For this annual plan, most fees and charges have increased to align with inflation, while some have increased further to ensure that we are covering costs. In addition, there have been several recent legislative changes that require us to implement new fees and charges as part of the Council's responsibility to administer these Acts. A complete list of Fees and Charges is included in the Supporting Information.



Have your say!

The public consultation runs from 18 March to 12 April 2019.
There are a number of ways you can give feedback depending on what suits you.



In Person



Written Feedback



Social Media

Written Feedback

You can contribute feedback online at www.chbdc.govt.nz or fill out the attached feedback form and drop it into the Council offices or libraries or send to:

Central Hawke's Bay District Council
P O Box 127
Waipawa 4210

You can also email us at: thrive@chbdc.govt.nz

In Person

Come and talk with us at one of our **Have Your Say** events. This is the opportunity for you to give feedback in person and be heard by the Council.

- There's no need to register or pre-book
- There's no need to make a submission ahead of the event
- There will be a presentation at the beginning of the meeting
- People have a chance to hear the views of others as well as saying your own
- Note-takers capture the feedback
- Subject-matter experts are available to answer questions
- Elected members will be present: their role is to listen to the conversation and ask questions to seek understanding

Social Media

Comments made through Facebook will be considered feedback:

Post on [facebook.com/CHBDistrictCouncil](https://www.facebook.com/CHBDistrictCouncil) – using #chbthrivealive

If you would like help completing your submission, please contact Council and we will arrange for assistance.

Events will be held in these locations on the following dates from 7pm to 9pm:

Waipukurau

27 March | Waipukurau Memorial Hall, River Terrace

Elsthorpe/Omakere

28 March | Elsthorpe Hall, Kenderdine Road

Otane

1 April | Otane Hall, Higginson Street

Porangahau

2 April | Porangahau Hall, Abercromby St

Takapau

3 April | Takapau Hall, 37 Charlotte Street

Tikokino/Ongaonga

8 April | Tikokino Hall, Owen Street

Waipawa

9 April | CHB Municipal Theatre, 18 Kenilworth Road

You are welcome to come to any event if you are unable to attend the event in your area.

Alternatively if you have questions for one or more of your Councillors or Mayor you can phone them.

Alex Walker	027 860 7752
Tim Aitken	027 472 4587
Kelly Annand	027 479 4000
Shelley Burne-Field	027 630 6363
Tim Chote	027 448 2014
Gerard Minehan	027 479 3773
Brent Muggerridge	021 332 353
Ian Sharp	021 614 311
David Tennent	027 445 0952

Together we Thrive!
E ora ngātahi ana!

You are able to comment on anything included in the Consultation Document or provide any other feedback.

Need more room?

You can attach extra pages but please make sure they include your name and contact information.

Submission Form

Your Details

Submitters Name:

Postal Address:

Day Phone: Night Phone:

Mobile: Email:

Do you wish to present your comments to Council in person at a hearing? Yes No

Please note that your submission (including any personal information supplied) will be made available to Councillors and the public. Submissions Close on 12 April 2019 at 5pm.

Submission Questions

1. Tell us what you think about the proposal that Council gives a \$250,000.00 suspensory loan to Water Holdings CHB Ltd to keep the prospect of water storage alive in Central Hawke's Bay.

3. Do you support the establishment of the Disaster Relief Fund Trust?

2. Do you agree with the changes to the Revenue & Financing Policy?

4. Do you have any feedback on the Draft Environmental Strategy?

Any other suggestions?





*Together we Thrive!
E ora ngātahi ana!*

**We are bringing
our vision for Central
Hawke's Bay alive to
create a proud and
prosperous district.**

CENTRAL HAWKE'S BAY DISTRICT COUNCIL

www.chbdc.govt.nz • thrive@chbdc.govt.nz • 06 857 8060
PO Box 127 • 28 - 32 Ruataniwha Street, Waipawa 4210



**CENTRAL
HAWKE'S BAY**
DISTRICT COUNCIL

together we thrive