



Waipukurau / Waipawa Second Water Supply

We are Facing the Facts

The Central Hawke's Bay District Council's current long-term plan identifies a project to provide resilience, increase capacity, support growth and ultimately future proof Waipukurau's drinking water network by adding a second supply.

It's imperative that we build resilience in our water supply to ensure everyone in Central Hawke's Bay has access to safe drinking water, now and in the future.

This information sheet revisits the issues with the existing Waipukurau and Waipawa water supply systems as well as summarises the chosen solution, progress to date and next steps.

Summarising the Issues

As a result of aging infrastructure and lack of investment for quite some time, the resilience in the supply to Waipukurau is only 10-12 hours' worth of water.

Broken down, the issues with the current supply are:

- A lack of strategic storage
- Risks to security of supply if there are issues with the existing source, reservoir or trunk main
- Constraints to servicing planned future growth and infill
- Areas of insufficient fire-fighting flow

Project Status at a Glance

A significant amount of work has been completed on this project to date; we are now in a position where Council has approved the adoption and progression of the preferred and recommended option of constructing a pipeline and establishing a new centralised storage reservoir between Waipawa and Waipukurau, supplied from the Waipawa borefield.

During the decision (which was made at a recent Council meeting on Thursday 19 May 2022) Councillors made clear the continued importance of collaborative partnership with mana whenua, and that the protection of the environment is at the forefront of Council's decision making.

Council also approved the establishment of a project governance group to provide oversight and leadership across the project.

the BIG Water Story



This decision endorsed the project and preferred option we have been working on, which will connect the two towns water supplies to deliver the best practicable solution for building resilience, achieving community outcomes, future proofing and ultimately delivering on the principles set out in our 2021 Infrastructure Strategy.

This is a critical milestone for the project, that now allows us to move forward and progress construction.

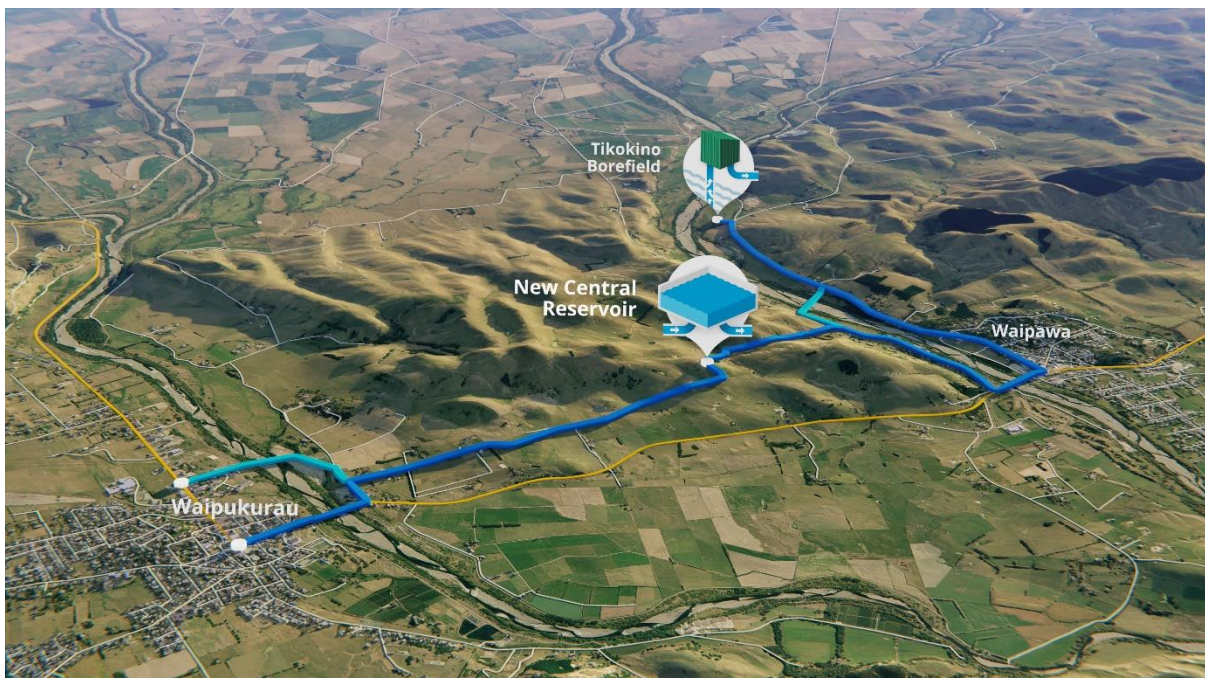


Figure 1: The planned layout for the chosen solution – noting the river crossings are still undecided

Next Steps

The team are now focussed on progressing a series of key workstreams to complete construction and commission the system by June 2024.

Some elements of the construction and delivery of this option require further investigation and knowledge to make the best decision while considering all desired outcomes (infrastructure, community, partnership, smart growth and environmental).

Most specifically, the decision of how to cross the two rivers is critical. In order to understand this more fully the project team recommends that geotechnical work in the river corridors is carried out, as well as a full evaluation of the feasibility of connecting a pipeline across a structure, and how that looks in respect of resilience and climate change.

the BIG Water Story



Alongside this, ongoing engagement with mana whenua is critical to further develop the understanding of how Te Mana o Te Wai principles can be integrated into this decision. The National Policy Statement for Freshwater Management 2020 introduced the concept of Te Mana o te Wai, which developed a hierarchy of priority obligations. Ongoing development and priority of these obligations will require a continued partnership approach between Council and mana whenua throughout the project.

The plan is to procure a panel of contractors, to deliver staged components of the project; this will deliver greater efficiencies and innovation and allow Council to commence delivery while finalising pieces of the design.

Work will also be going into obtaining the required and necessary resource consent/permissions to proceed with construction, including the water take consent to augment the Waipawa Tikokino Road borefield.

The physical works involved with delivering this project includes:

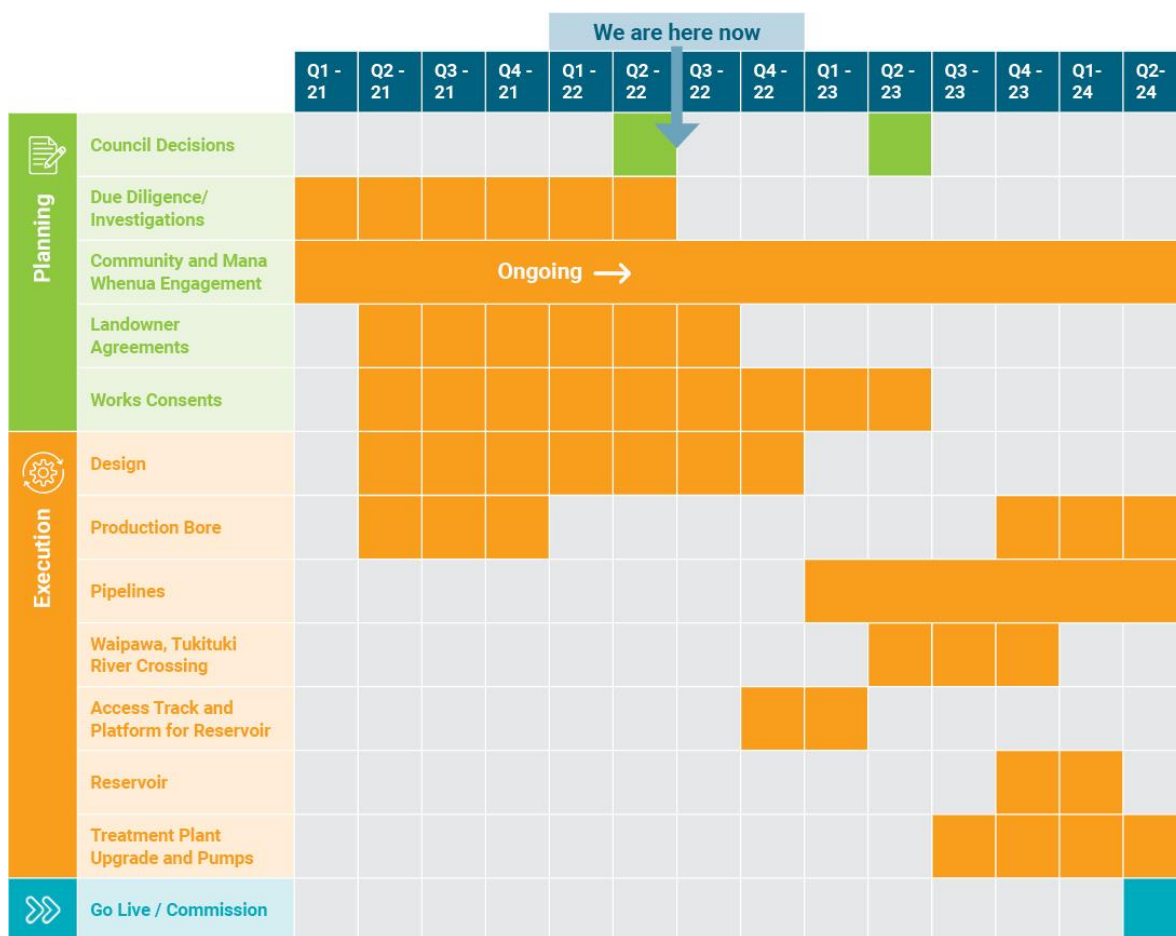
- Expanding the capacity of the Waipawa Borefield from 55 L/s to 155 L/s - this includes one, maybe two new bores to be added to the borefield.
- Upgrading and sizing the Waipawa water treatment plant to treat the increased water take, additionally improving flood risk by adding protection.
- Laying a 450 / 355 mm rising main from the borefield along Tikokino Road, across the Waipawa River (method to be determined), along Ongaonga Road and up to the central reservoir. There is also a branch rising main running up to the Abbottsford Road Reservoirs to replace an aged existing main. The main in Tikokino Road and up to the Abbottsford Road Reservoirs is under construction and due for completion by end of 2022.
- Constructing a 3,000,000-litre steel reservoir which provides operational and emergency water storage. Providing capacity for a second reservoir in time. The reservoirs will be at the same elevation as Pukeora Reservoir so the reservoirs can supply Waipukurau at the same time.
- Laying a 450 mm falling main from the central reservoir south through farmland, across the Tukituki River (method to be determined) to connect to Waipukurau water network.
- Installing pressure reducing valves at the boundary of the low zone in Waipukurau to enable the low zone to be fed off Pukeora and the Central Reservoir, thereby avoiding the need to renew Hunter Park Reservoir.

This option enables the Waipawa Borefield to supply water to Waipawa and Waipukurau. Normally about 20% of Waipukurau demand would be met from Waipawa in order to 'turn over' water in the pipes and reservoir. The scheme could fully supply Waipukurau if required for operational or emergency reasons. Water can also be fed back from the Central Reservoir to Waipawa if required, and in future it would be possible to add a pump station at Waipukurau to supply Waipawa from Waipukurau.

the BIG Water Story



Indicative Project Timeline



*Blue arrow refers to where we are in the project now.

Ongoing Communication

The project team is developing a suite of short videos to explain the project, along with these information sheets and a regular newsletter, to learn more visit: www.chbdc.govt.nz/our-district/projects/bigwaterstory/waipukurau-second-drinking-watersupply/

