

#the BIG. Water Story



July 23 2021

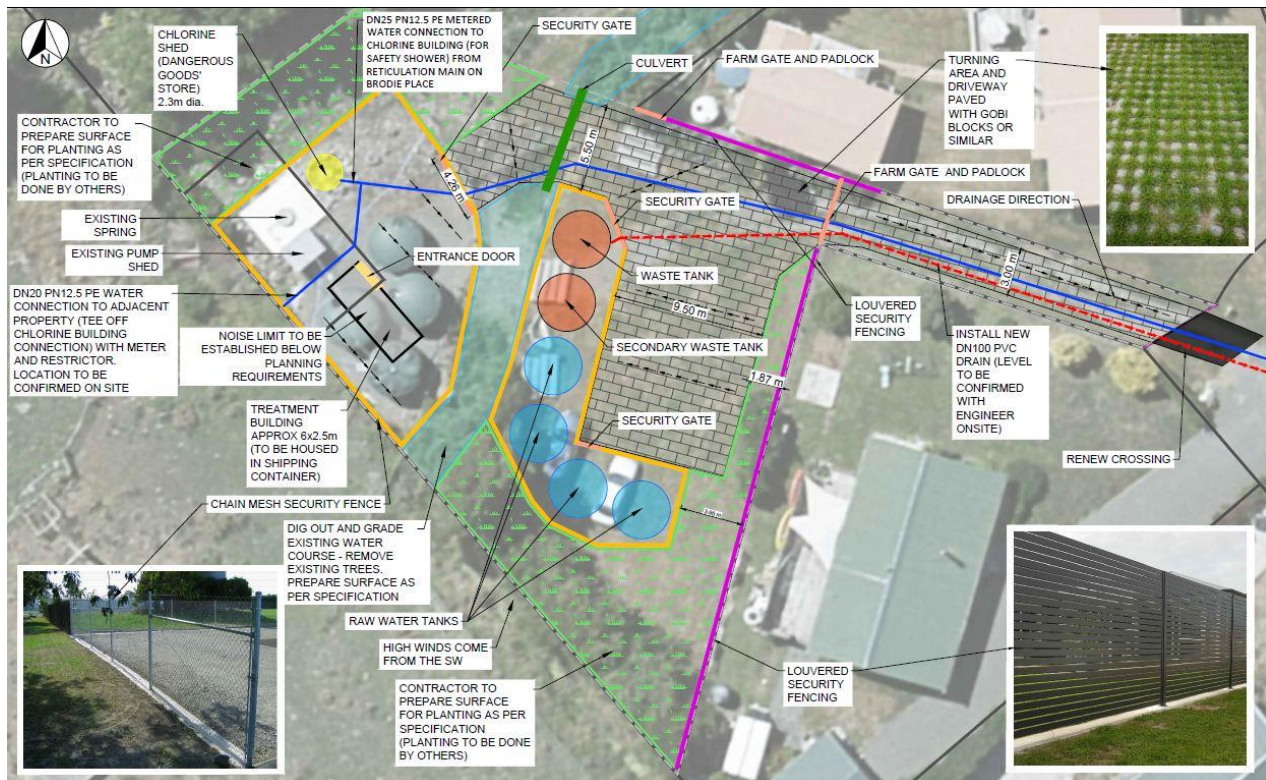
Kairakau Water Supply Upgrade

Background:

For some time now, the Central Hawke's Bay District Council has been exploring options in order to upgrade the Kairakau drinking water supply. The Kairakau water supply was signalled as a key project leading into the 2018 Long Term Plan, – Together we Thrive – as part of the #BigWaterStory. Council is committed to providing durable infrastructure, that allows for smart growth, is environmentally responsible and ensures our proud communities are able to prosper. This project is a key enabler of our THRIVE objectives while meeting future regulatory requirements and community demands on infrastructure.

Following a Council meeting in June 2021, the project team have been working with our technical consultant WSP in order to develop the initiative for tendering into the market late July. Please see updates and the latest set of technical drawings below.

Spring Location - Brodie Place:



the BIG Water Story



- a. Lease discussions with the Manawarakau Charitable Trust (MCT) are still in process with legal counsel however, all parties continue to support the intent of expanding this location for the treatment plant upgrade.
- b. Drinking Water Standards New Zealand compliance requirements include erecting of a chain fence to secure the spring. The MCT support the fencing of this area to keep the community safe and help with their ongoing maintenance and care of the site.
- c. The project is being tendered as a 'design and build', meaning we intend bringing a contractor to support this under performance requirements. Once the contractor is awarded, further design development will take place and include consultation with landowners directly affected with the capital work.
- d. Planting of the project will be sought as a separate project from the principal contractor, using locally sourced natives and be performed in accordance with a planting guide from QEII. We are interested to hear from landowners who would like to support this planting initiative.
- e. Council approved installation of water hardness treatment. The design includes 2 tanks to hold the waste from this process as an interim measure, which will be moved by tanker to Waipawa for disposal. Council are investigating options for locally discharging this waste. This project will be separate to the July tender.

Statement from the Manawarakau Charitable Trust (MCT):

The Manawarakau Charitable Trust has been working with Council to find a solution to the ongoing use of the community made track at the back of the bore and water treatment site.

Due to the ongoing operational activities, maintenance and operational tanker access needed to the site access to the treatment plant leased land will be closed to the public. In addition, the walkway access along the MCT land will need to be permanently closed to ensure public safety. The MCT is committed to the native planting of the land and look forward to enjoying it with the community in the future when a safer alternative becomes available.

Council and the MCT apologise for any inconvenience the restriction of this path may cause.



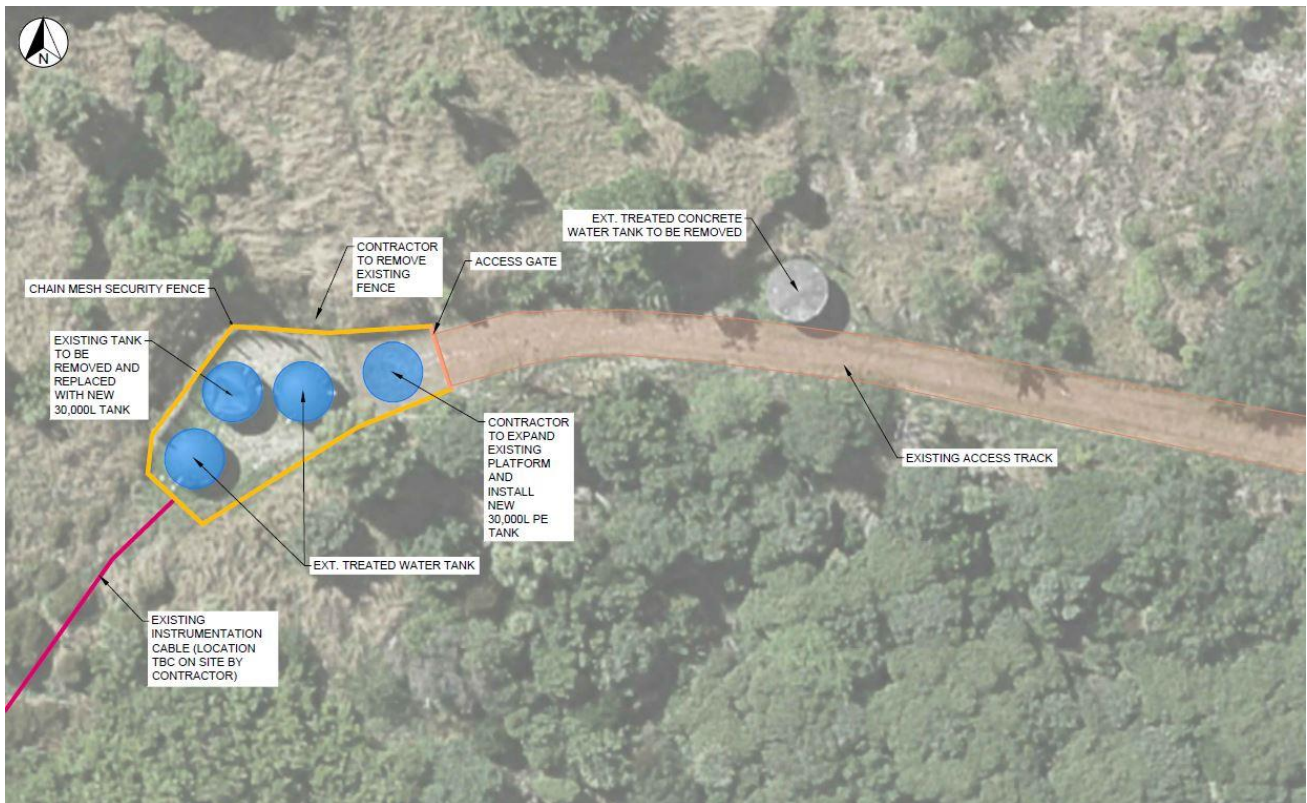
Bore Location – Kapiti Place Reserve Land:



- Drinking Water Standards New Zealand compliance location include erecting of a chain fence to secure the bore.
- This fencing may require removal of some of the adjacent vegetation We have tried to keep this to a minimum, this will be refined further when a contractor is on board.
- We are unable to plant in front of the access gate on the Kapiti Reserve due to the need for operational access to the bore. Intent would be to plant to the right of the gate, guided by QEII.



Treated Water Tanks - Bush Reserve Hill:



a) Intent is to consolidate all treated water tanks up the hill under one compound, including replacement of the existing concrete tank servicing the campground.

b) Fencing of this compound will be softened with planting guided by QEII.

For more information:

You can visit our website, chbdc.govt.nz, call the Council 24/7 on 06 857 8060 or email: Michael Kilduff – Senior Project Manager: michael.kilduff@chbdc.govt.nz

To view or print images, please head to our website <https://www.chbdc.govt.nz/our-district/projects/bigwaterstory/kairakau-water-upgrade/>