

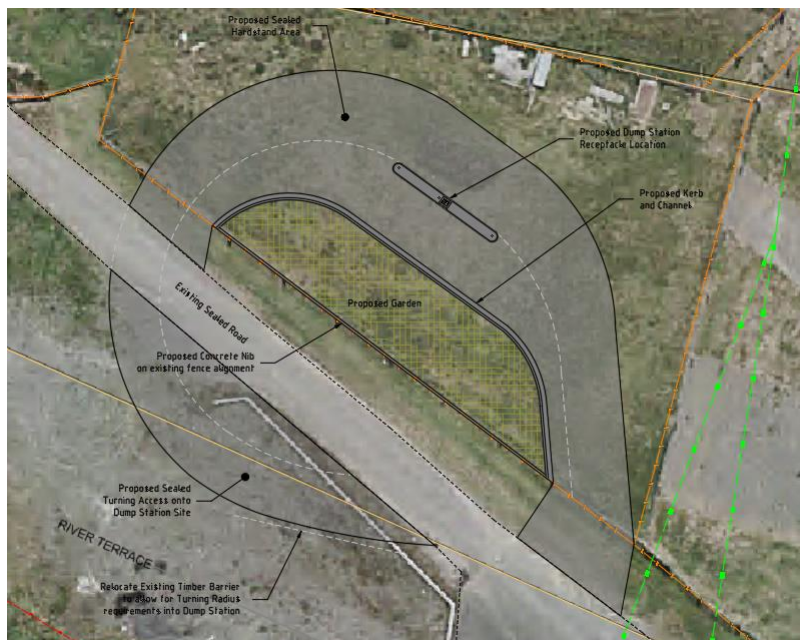
# #the BIG. Waste Water Story



## CHB Motor/Caravan Dump Stations

The Central Hawkes Bay District Council (CHBDC) is embarking on a project to install caravan/motorhome dump station in Waipukurau to service those travelling to/through the district and to provide a service that further enhances Central Hawkes Bay's reputation as a fantastic tourist destination. There are currently no public, free to use, wastewater dumping stations for caravans and motorhomes to use within Central Hawkes Bay. CHBDC investigated several locations and has chosen River Terrace, Waipukurau at the rear of the Waipukurau Holiday Park as the preferred central location. This project will be completed by Downers.

The site will be developed with a chip-sealed pavement to form a turning circle suitable for large motorhomes. This will include a concrete dump station receptacle with a wastewater sump, non-potable water supply for cleaning and a potable water supply for refilling of on-board water storage. A central garden area will be formed and planted.



### What does a Dump Station do?

A dump station is a small facility designed to protect public health and the environment by ensuring the proper disposal of wastewater from recreational vehicles e.g. motorhomes, campervans, and boats.

### How does it work?

The dump station consists of a hardstanding area and a precast receptacle, wastewater is "dumped" into this precast unit and discharged through a "P Trap" directly into the wastewater network. A Non-potable water supply is normally supplied for cleaning and a potable water supply for refilling of on-board storage.

### How does this benefit the community?

The attraction of travellers to stay in local communities, and the subsequent opportunity to promote spending with local businesses infuses money into local communities, sending ripples of economic support throughout the business' entire local supply chain.



Example of a dump station

For more information, contact Council 24/7 on 06 857 8060 or visit: <https://www.chbdc.govt.nz/our-district/projects/the-big-wastewater-story/central-hawkes-bay-wastewater-dump-stations/>