

Otane Land Development (Water and Wastewater)

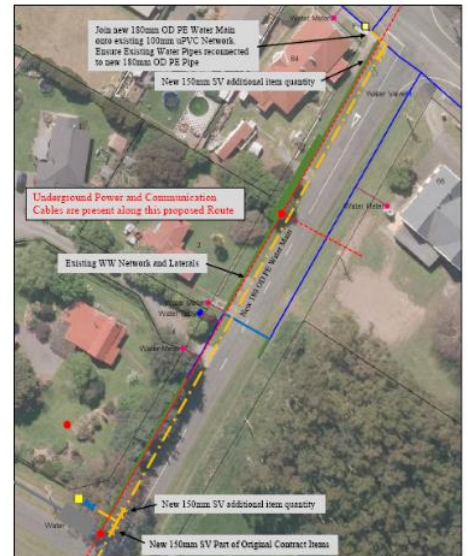
A project was undertaken in the early part of 2018 to assist the developers of a new subdivision on White Road in Otane with the water and wastewater infrastructure to service their development.

The project involved a new water and wastewater main along White Road, along with a wastewater pump station situated on the development boundary on White Road to pump wastewater to council's network.

The project has progressed well on site in alignment with the development of the subdivision project and internal piping completed by Advanced Plumbing Ltd. The crew spent some time away from the site due to another planned renewal project in Peel St, Waipukurau aligning with the roading programme.

Council's contractor Higgins have completed laying the wastewater at the end of Sep 2018, and will have commissioned the pump by the end of Oct 2018. They then move into the next stage of the project to lay a water main from the Knorp St intersection through to the intersection of Higginson and White Road. This is combination of the development project and the alternate water supply project.

The aim is to have all this work complete by the end of Nov 2018. When the crew will move to another renewal project in Porritt Place, Waipukurau.



COUNCIL'S PROPOSAL

Water

- * Standard 50mm water rider mains along Dee and Bell Streets
- * Council to install first stage of second supply into Otane along White Road

Sewer

- * Council to install a single pump station along White Road that would service the Livingston Development site and, with the use of gravity mains service, the Stone Development, and allow for future expansion along Knorp St if required due to more development or pumped raising main issues
- * Would also allow the area opposite 18 Knorp St to be serviced by a Council network if developed

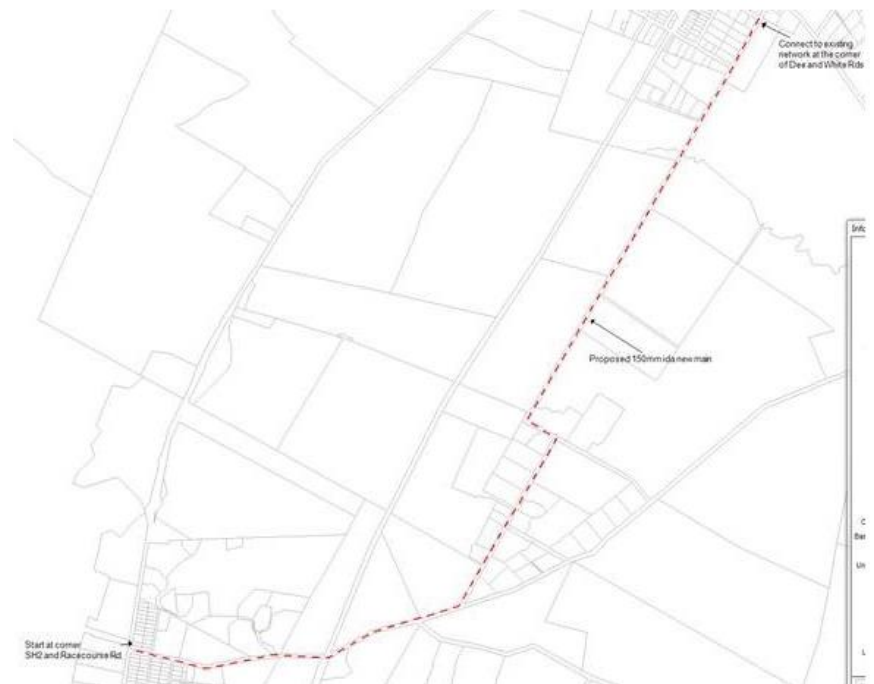


Otane Alternate Drinking Water Supply

A small section of this project has been awarded as an extension of the existing land development works underway on White Road in Otane (photo above).

This will allow council to tender out the project from the intersection of White and Knorp Street – along White Road through to Racecourse Road, along Racecourse Road under the railway crossing and through to tie into the existing network on the corner of Racecourse Road and SH2 (draft route – on the right)

This section of the project is currently in the design/ planning phase and council hopes to be in a position to tender the works in late Nov/ Dec 2018. With site works to start in Feb 2019.



Update: 1 Oct 2018