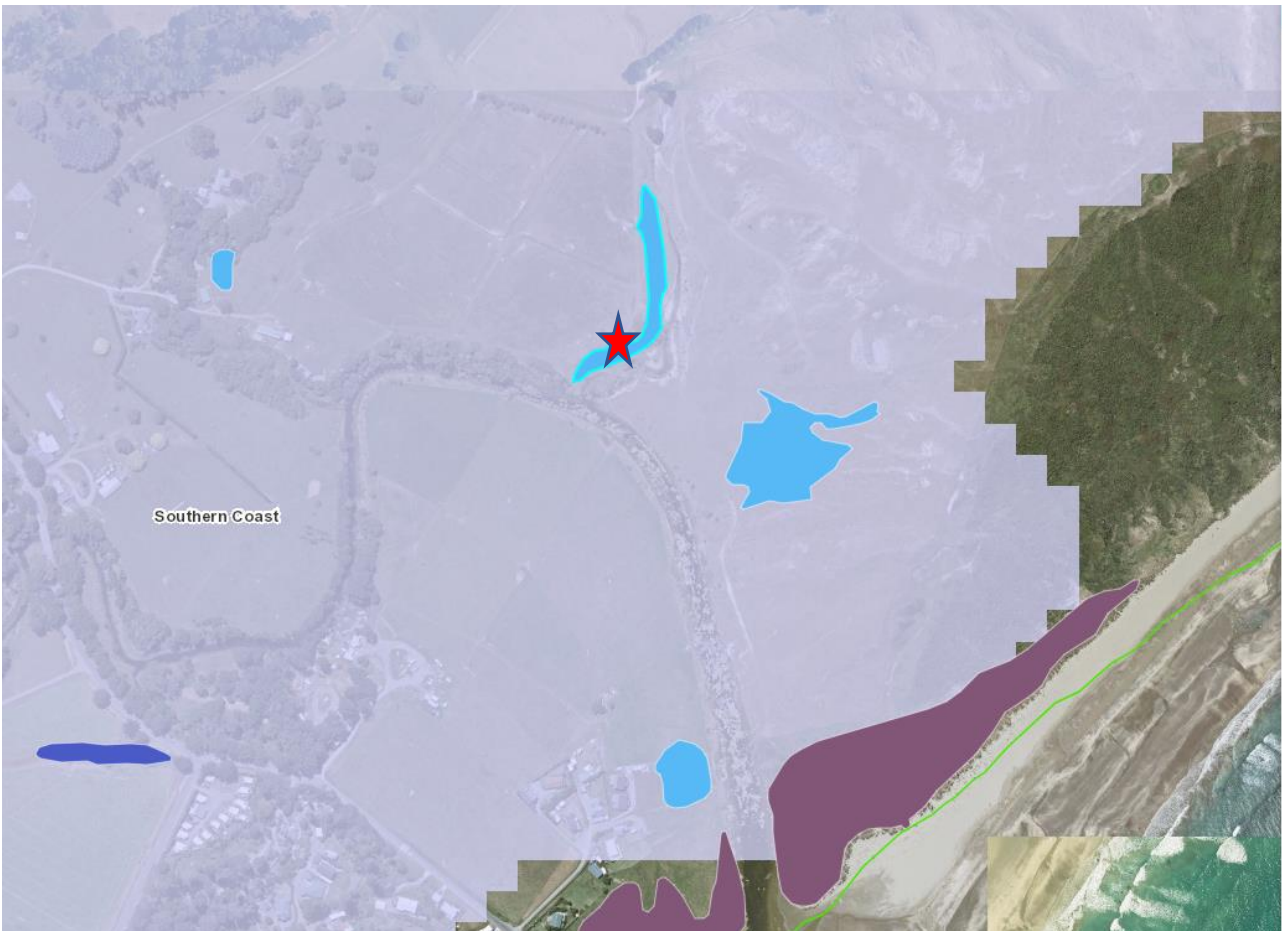


## Wetlands – Inventory information

- Each wetland highlight in light blue with a red star relates to corresponding description on the right hand side



Southern Coast

Details

(1 of 2) [Clear](#)

[Zoom to](#) [Clear Selected](#) [...](#)

Hawke's Bay Wetland Inventory Polygons:

**Wetland ID: 7476**  
*(Unique HBRC wetland identifier)*

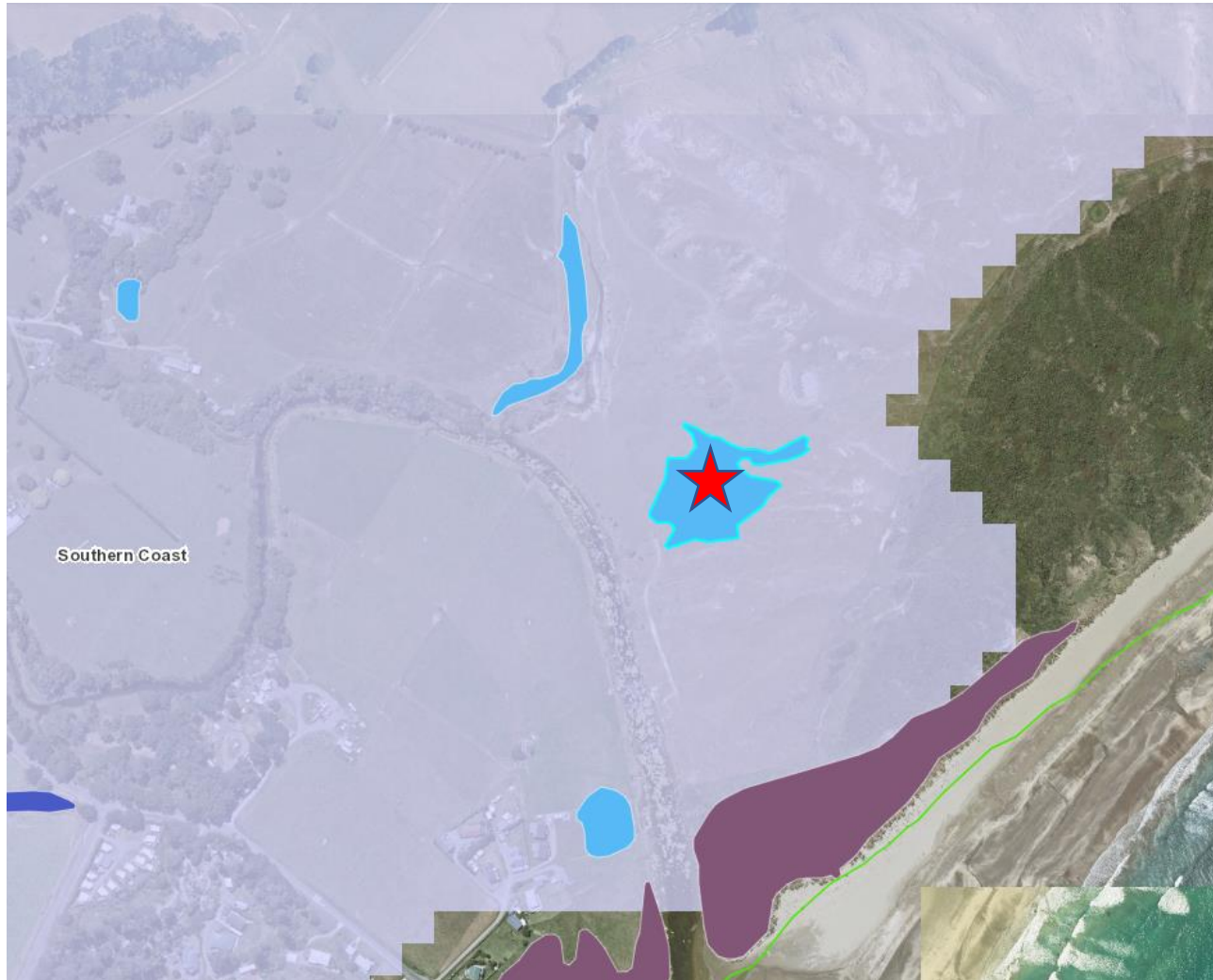
**Wetland Name:**  
*(Wetland name based on information mainly from Land Information New Zealand (LINZ) Topo 50 map. This field is left blank for wetlands without any name indicated in the LINZ Topo50 map.)*

**Hydrology System: Palustrine**  
*(Classification based on broad hydrological and landform setting, salinity, and water temperature.)*

**Wetland Class: marsh**  
*(Classification based on substrate, water regime, nutrients, pH and vegetation types to an extent. Note those parameters are not groundtruthed for the majority of wetlands identified in this dataset.)*

**Wetland Form: riparian**  
*(A subsidiary set of descriptors of landforms which wetlands occupy, and forms that they create or contain.)*

**Area(ha): 0.33**  
*(A subsidiary set of descriptors of landforms which wetlands occupy, and forms that they create or contain.)*



## Details

(1 of 2) [Clear](#)

[Zoom to](#) [Clear Selected](#) ...

### Hawke's Bay Wetland Inventory Polygons:

**Wetland ID: 7475**  
*(Unique HBRC wetland identifier)*

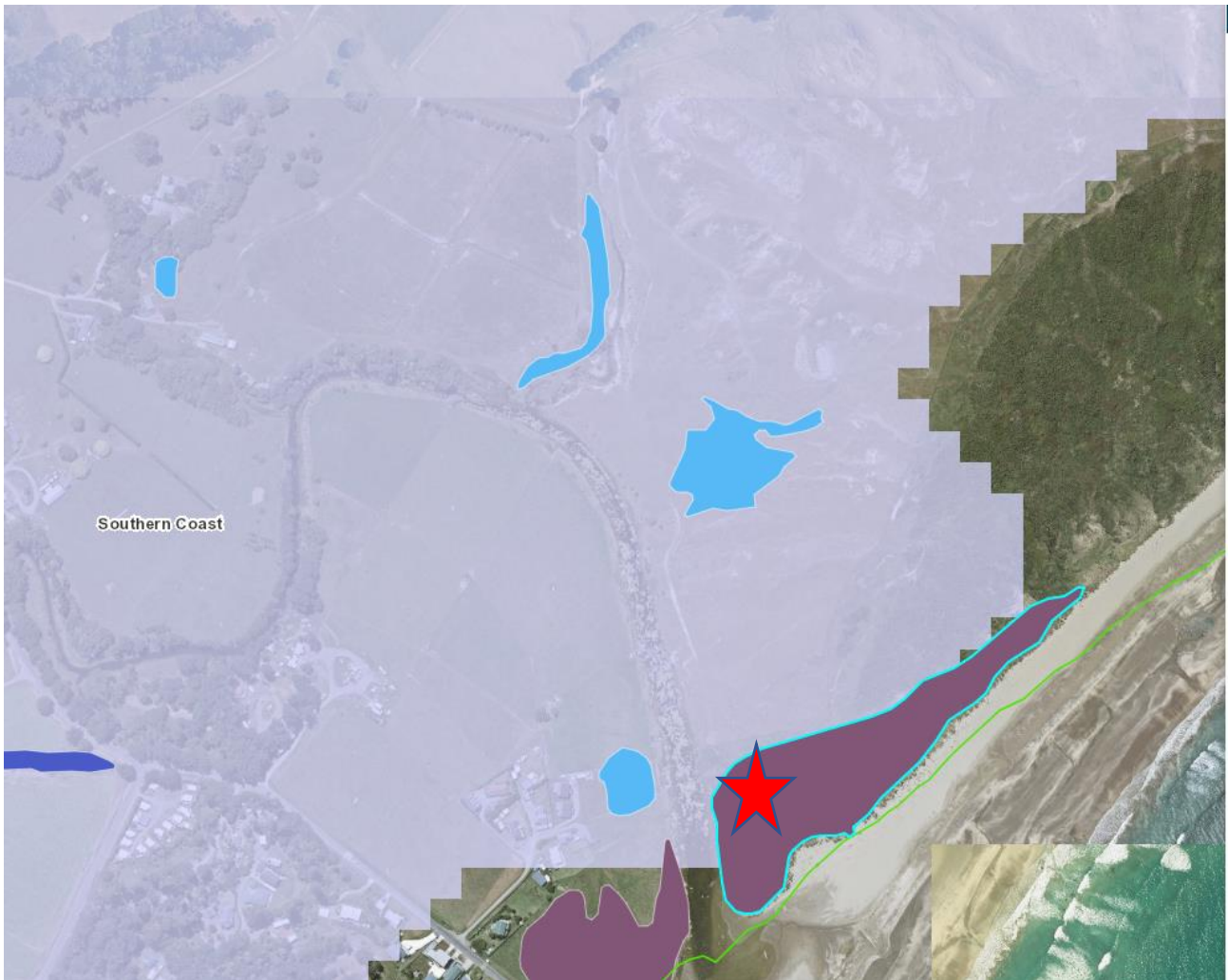
**Wetland Name:**  
*(Wetland name based on information mainly from Land Information New Zealand (LINZ) Topo 50 map. This field is left blank for wetlands without any name indicated in the LINZ Topo50 map.)*

**Hydrology System: Palustrine**  
*(Classification based on broad hydrological and landform setting, salinity, and water temperature.)*

**Wetland Class: marsh**  
*(Classification based on substrate, water regime, nutrients, pH and vegetation types to an extent. Note those parameters are not groundtruthed for the majority of wetlands identified in this dataset.)*

**Wetland Form: slope**  
*(A subsidiary set of descriptors of landforms which wetlands occupy, and forms that they create or contain.)*

**Area(ha): 0.81**  
*(A subsidiary set of descriptors of landforms which wetlands occupy, and forms that they create or contain.)*



Details

(1 of 2) [Clear](#)

[Zoom to](#) [Clear Selected](#) ...

Hawke's Bay Wetland Inventory Polygons:

---

**Wetland ID: 7473**  
*(Unique HBRC wetland identifier)*

**Wetland Name:**  
*(Wetland name based on information mainly from Land Information New Zealand (LINZ) Topo 50 map. This field is left blank for wetlands without any name indicated in the LINZ Topo50 map.)*

**Hydrology System: Palustrine**  
*(Classification based on broad hydrological and landform setting, salinity, and water temperature.)*

**Wetland Class: saltmarsh**  
*(Classification based on substrate, water regime, nutrients, pH and vegetation types to an extent. Note those parameters are not groundtruthed for the majority of wetlands identified in this dataset.)*

**Wetland Form: shore**  
*(A subsidiary set of descriptors of landforms which wetlands occupy, and forms that they create or contain.)*

**Area(ha): 2.77**  
*(A subsidiary set of descriptors of landforms which wetlands occupy, and forms that they create or contain.)*