



CENTRAL
HAWKE'S BAY
DISTRICT COUNCIL



Together we thrive!

Chief Executive's Report
Central Hawke's Bay District Council

July - August 2022

Together we Thrive! E ora ngātahi ana!



Our Strategic Direction

Together we Thrive!

Our vision for Central Hawke's Bay is a proud and prosperous district made up of strong communities and connected people who respect and protect our environment and celebrate our beautiful part of New Zealand.

What we know - Our DNA -



WORKING TOGETHER

Central Hawke's Bay will be stronger when we work together. Partnerships and collaboration are at the core of everything we do.



CUSTOMER EXCELLENCE

The communities we serve are our customers. They are at the heart of our decisions, interactions and communication. We'll engage with our customers to deliver value and exceed expectations.



PLANNING FOR TOMORROW

We will act with purpose, and think with a long-term lens to make sure our actions future-proof Central Hawke's Bay.



THINKING SMARTER

We need to think smarter and better in everything we do. With a culture of innovation and continuous improvement we will add value to our communities.

What we stand for - Our Values -



Our values capture who we are and what matters most to us. They are the attitudes we embrace as individuals, teams and as a whole organisation. We are all personally responsible for acting with these in mind.

- 1 TRUST** - We create trust by acting with integrity.
- 2 HONESTY** - We do what is right even when no one is looking.
- 3 RESPECT** - We have respect for each other, our community and our stakeholders.
- 4 INNOVATION** - We find smarter ways to produce improved and sustainable results.
- 5 VALUING PEOPLE** - We are one team, supporting each other to succeed.
- 6 EXCELLENCE** - We deliver exceptional results.

What we're most proud of - Our Greatest Asset -

People are our greatest asset. At Central Hawke's Bay District Council we are committed to providing a safe and great place to work that values diversity and inclusion, and develops skilled people who can lead our community to thrive.



Why we do what we do - Our Purpose -

It's our goal to create an environment that supports a thriving Central Hawke's Bay district, by providing efficient and appropriate infrastructure, services and regulatory functions.



The outcomes we want to achieve - Our Objectives -



- A proud district.
- A prosperous district.
- Strong communities.
- Connected citizens.
- Smart growth.
- Environmentally responsible.
- Durable infrastructure.

How we'll reach our outcomes - Our Focus -



- Promoting smart growth.
- Attracting and enabling business success.
- Strengthening our district and community identity.
- Protecting and promoting our unique landscape.
- Planning for tomorrow to future-proof Central Hawke's Bay.



E ORA NGĀTAHI ANA – TOGETHER WE THRIVE.

KIA ORA KOUTOU FROM THE CHIEF EXECUTIVE

This report provides an update of the organisation's activity for the period of August - September 2022 and provides a snapshot of some of the organisation's achievements over the period.

Success with Streets for People!

It was great news in early September to announce that Council has been announced as one of thirteen Councils across New Zealand who gained funding from Waka Kotahi NZ Transport Agency Streets for People Programme.

For a long time now the Waipawa community has had major concerns about pedestrian safety along the main street. Our tamariki cross this road to get to school and the busy, fast-moving traffic has been worrying for us all. With funding of some \$1.5 million committed over the next two years we will be working with local businesses and the community to make improvements to Waipawa's main street, including traffic calming interventions into Waipawa and improving walking and cycling connections across State Highway 2.

Spring Fling in Central Hawke's Bay

Despite the wet and cold, Spring is here and on 2 September we officially launched the Spring Fling for 2022. In a few short weeks, already over \$40,000 in ticket sales has been achieved with a number of events sold out and additional event offerings being well-received.

A highlight was the Spring Market on the main street, that saw a boost for local Waipukurau traders. I'd encourage community and visitors alike to get out and enjoy all Central Hawke's Bay has to offer as part of the Spring Fling.



Hawke's Bay Regional Public Transport Plan

A particular highlight in the period was seeing community voice come to the fore as the call went out for community feedback on public transport options for the plan. With over 300 pieces of feedback, the submission Council made for the Regional Transport Committee carried real weight, supported by local community voice.

Three Waters Reform

Following the Councils submission on the Water Services Entities Bill in early July, in August Mayor Alex Walker presented the submission to representatives of the Finance and Expenditure Committee.

Arrangements for 1 July 2024 continue to gain momentum with the National Transition Unit now being fully staffed and key work programmes also progressing.

Future for Local Government Review

The Minister of Local Government has extended the due date for the final report of the Review into the Future for Local Government to 19 June 2023 (previously 30 April 2023).

Local Government New Zealand requested the extension to provide more time for the local government sector to engage meaningfully on the draft report given the pending local body elections in October 2022. The new consultation period will now run from mid-October 2022 until 28 February 2023.

To date the panel have identified five key shifts to local governance that they believe will be required if the system is to meet the needs of Aotearoa in 30 years' time:

- Strengthened local democracy
- Stronger focus on wellbeing
- Authentic relationship with hapū/iwi/Māori
- Genuine partnership between central government and local government
- More equitable funding

Ngā mihi

Doug Tate
Chief Executive

Activity

Updates



Safer
CENTRAL HAWKE'S BAY
Haumarutia e Tamarua

SOCIAL AND ECONOMIC DEVELOPMENT

Safer Central Hawke's Bay

The coalition group have met once during this reporting period. The Safer Central Hawkes' Bay Teams site is operational, and members are able to access real time information and share documents.

The coalition goals for 2022/2023 are:

- Continue to enhance communication with the wider community
- Gather, use and share available injury prevention data to enable measurement of impact
- Listen and respond to our community
- Encourage and support iwi participation
- Maintain regional and nation Safe Community relationships

Planning for the Safer CHB Precinct at the annual CHB A & P Show is underway. This event provides a platform for all workstreams and member organisations with the opportunity to have face to face engagement with a large number and range of people. With COVID affecting the show over the past 2 years the network is especially looking forward to being present at this large event.

The Safe and Healthy Homes workstream distributed 338 pairs of pyjamas during the Jammies for June campaign. The network is also delighted to partner with Recreational Services and Veolia (RSV) on their Home Safety project. 27 RSV staff have been trained to install smoke alarms and do home safety checks and will be using their staff community service days to do this work across the district. This will enable the Safer and Healthy Homes network to continue on with its goal of getting free long life smoke alarms into every home in Central Hawke's Bay and we are extremely pleased to be partnering with RSV on this project.

Violence Free CHB, the Safer Central Hawke's Bay workstream focused on family harm prevention is currently planning a range of events and activities for White Ribbon month in November. This will include a public event featuring Rob Veale, a prominent and experienced lecturer specialising in enhancing safety through providing family violence advice to communities.

Mental Health and Awareness week runs from 26 September to 2 October and the theme this year is "Reconnect – with the people and places that lift you up, hei pikinga waiora." The Community Resilience and Wellbeing workstream will be promoting this annual awareness week and have been gifted a number of the Live Well Farm Well Farmstrong books to give away during the week.

Member organisations of the Road Safety workstream have partnered to deliver a number of roadside checks in the district. Local FENZ staff have been trained to assist Police and Road Safe with these checks. This will support the goal of increasing trained staff which will enable a significant increase in the capacity to perform these checks in the district. The group is also working towards how we can locally respond to the demand for advice, information and access to car restraints.

Central Hawke's Bay Older Persons Network

The network has met once during this reporting period.

International Day of the Older Person is celebrated annually on the 1 October and planning is underway to host a local event. This day recognises and celebrates the contributions that older people make to society.

The network continues to raise concerns around the lack of banking services in the district and how this impacts older people. Many member organisations continue to support their members with advice and information to fill the gap that has been created by the loss and reduction of face-to-face banking services

Central Hawke's Bay Disability Network

The network has met once during this reporting period. Following on from confirmation of Council's success with the Tourism Infrastructure Fund planning is underway at Pourerere Beach on the development of accessible toilet facilities and beach matting at Pourerere Beach.

The network has been working with the Waipawa Streets for People project team and are thrilled to see that an Accessibility Audit has been included in the project. The audit will focus on pedestrian infrastructure such as footpaths and road crossings and features that may affect transport accessibility e.g., mobility parking and street lighting as well as accessibility of key connections in the township.

Youth Development Network

The network is collating information collected from the short survey that was sent out to organisations and voluntary groups that work with young people in our community. This will assist them with the identified priority area of "Who Are We?" – Understanding who is working in the youth space, allowing the network to better support young people and their whanau. Once this information has been collated, we can then as a network begin to identify potential opportunities and gaps in service provision for young people in our district.

Central Hawke's Bay Food Secure Network

The network continues to scope and research options for the utilisation of the Infrastructure Funding received from the Ministry of Social Development. This funding was received to strengthen the capability and resilience of the network to address critical infrastructure gaps. Options currently being explored include container storage with the ability to provide ambient, chilled and frozen options, trailer options to give network the ability to transport food into and around the district and a potential part time coordinator role. Logo development is near completion and a Central Hawke's Bay Food Secure website page is now live and is hosted on Council's website.

COMMUNITY FUNDING

Smarty Grants

Council launched its new Smarty Grants portal on 7 July 2022. The Smarty Grants software provides us with an efficient and effective tool for the administration of our portfolio of community funding. It will also enable us to make savings in council officers' time and provide a streamlined and professional service to funding applicants. So far two funding rounds have used Smarty Grants and the feedback has been positive from applicants and assessors.



Creative Communities Fund

The second Creative Communities round for the year closed on 19 August 2022. There were 9 applications received which the panel will assess when it meets on Wednesday 21 September 2022.

Community Voluntary Organisation Support Fund (CVOS)

Applications for the CVOS fund closed on Friday 8th August and 24 applications were received. Four applications were submitted to Category One for new projects or new applications which offers a pool of \$10,000 and twenty to Category 2 which offers a pool of \$20,000. The assessment committee meet on Tuesday 20th September to distribute the funds.

Community Pride and Vibrancy Fund

There have been three applications to the Community Pride and Vibrancy Fund in this reporting period. The fund has supported the Between the Lines Readers and Writers Festival with a grant of \$500 to support their free community event at the Central Hawkes' Bay Museum on 11 September 2022. The Food Scapes Passing the Knowledge group have

also been successful in receiving a grant from the Community Pride and Vibrancy fund to support their free event being held in Otane. This event, which is also part of the Spring Fling, will enable residents and visitors to participate in a range of educational presentations, workshop and exhibitions. One further application has been received and is currently being assessed by the committee.

Rural Travel Fund

The Rural Travel Fund is currently closed.

COMMUNITY PLANS

Regular reporting is provided in greater detail in the Strategy and Wellbeing Committee Priority report. Highlights for the period include:

Tikokino

The Tikokino Community plan was presented to the Strategy and Wellbeing Committee for adoption on 1 September 2022. Members of the Tikokino Community Plan working group presented their plan to the Committee outlining the goals and actions that had been developed.

The plan has four goals which include seventeen actions. These are

- Goal One: Moving around safely
- Goal Two: Retaining our dark sky and rural character
- Goal Three: Taking a lead in increasing our community connections
- Goal Four: Better partnerships and communication between us and Council



Pictured are working group members, elected members and council officers celebrating the adoption of the Tikokino Community Plan

Otane

The first iteration of the Otane Community Plan has been developed and will be presented to the working group on Monday 19 September. A range of consistent themes emerged from the korero and captured into the draft document. The working group will work closely with council officers and mana whenua to refine the plan in the coming weeks.

Takapau

The Takapau Community Plan was adopted by Council on 24 September 2020. A number of smaller focus groups continue to work on actions points and priorities from the plan. Council is progressing work on the development of the proposed Mobile Home Dump Station in the township following the announcement of our successful Tourism Infrastructure Fund application.

Ongaonga

The Ongaonga Community Plan was adopted by Council on 24 September 2020. A smaller focus group continues to progress the “Yeoman’s Boiler gateway project” with ground clearing work currently being undertaken at the site on the corner of Bridge Street and State Highway 50. This project contributes directly to Goal 2 of the plan “Market and promote Ongaonga as an outstanding destination”.

TOI TAMATEA – CENTRAL HAWKE'S BAY ART STRATEGY

On 7 July 2022 the Toi Tamatea Art Strategy for Central Hawke's Bay was adopted by Council. Since its adoption an arts network has been established whereby local artists and creatives come together every 6 weeks to communicate and share what is happening within the community. The first Toi Tamatea Network meeting was held on Tuesday 30 August and there were 10 people in attendance from a range of mediums from arts and crafts clubs to kids' arts programs. During the meeting discussions were held about the purpose of the network and the draft action plan was reviewed. The network is continuing to build via word of mouth within the community with the intention being that this network is one that council and community can come to for any art initiatives or consultation. The network is due to meet again on 11 October 2022.

MĀORI ENGAGEMENT – TŪHONO MAI TŪHONO ATU

For this reporting period the priorities have been organising a Mana Whenua, Tangata Whenua briefing on the 31st of July on how to become a candidate in the Local elections for Central Hawkes Bay District Council. Chief Executive Doug Tate along with Sally Crown who is a first term Council Member on the Napier City Council provided perspectives on life as a Councillor. Sally is of Māori descent representing the Nelson Park Ward in Napier. The number in attendance at the briefing although it was low provided a crucial component of increasing partnership activity. Improvements on building a more robust promotion framework was noted for the future.

The first part District Plan hearings for submitters on Tangata Whenua matters occurred on August 10th with the inclusion of wananga/hui planned for September. The wananga for the submitters on the tangata whenua provisions of the Proposed District Plan was introduced as part of the District Plan's hearing process for Hearing Stream 4 on Tangata Whenua sections of the Plan. Dave Milner, from Kahu Environmental (an external environmental Taiao specialist organisation from the Wairarapa) was engaged to provide the facilitation of the Wananga. The Pou Whātua's role in this procedure ensures that there is adequate haumarū/safety and that the process of tikanga (doing things right), manaakitanga (support) is upheld and maintained, while also ensuring that principles of natural justice apply to all submitters.

The Pou Whātua is also involved on the CHBDC project team for Waka Kotahi's Streets for People Programme which is a programme that aims to make it easier and faster to create safer, healthier and more people friendly streets in Waipawa. Iwi involvement in participating in surveys and future co-design is part of the ongoing tasks of the project. Some of the milestones of the project so far has been a team presentation to Waka Kotahi, and a successful bid of application for funding. One of the key outcomes has been to have strong mana whenua representation on the Co-design group.

Regional collaboration activity with the Te Kupenga Māori managers for this period included hosting in Tamatea/Central Hawke's Bay at the Paper Mulberry Cafe on the 18th of August. Key focus areas, Chief executive meetings, Regional Spatial Plan, Future Development Strategy, Training and Collaborative Projects updates.

Economic Development Agency (REDA)

The Matariki Governance Group (MGG) met in August to confirm the governance and shareholding arrangements for REDA. An update paper will be delivered to council on, or before, the 29th September 2022.

Some updates to the timelines are as follows:

- The board appointments process will start mid-September. Board members are expected to be announced in mid-November.
- Confirmation of the shareholding entities for REDA and incorporation of REDA will occur in parallel and is expected to be completed end of October.
- The funding agreement with councils will be signed by the end of November, allowing REDA to enter into contracts and transition the Business Hub functions.
- KPIs will be reviewed and confirmed by the REDA Board and MGG by the end of November.

Business Hub

Owners of the Business Hub in Ahururi have given notice to the tenants that the lease will be terminated at the end of January 2023. Councils (HBRC, HDC and NCC) are working to find new premises for the existing tenants and stakeholders. This also provides an opportunity for the REDA to co-locate with the Business Hub.

Central Hawke's Bay Business Network

The network met on Monday 5 September, with 11 local businesses and council staff meeting. Discussions occurred around the purpose and vision of the network with everyone agreeing it was a platform to communicate, share knowledge, collaborate for local initiatives and a way for council to be able to work alongside local business. The organising committee for the Spring Market Day reported back to the network sharing the success of this event and discussions turned to the next initiatives that the network could complete. These included a "Shop Local" communication campaign, bringing local CHB Business Awards to the district and Christmas and Art Deco Markets. Attendees were encouraged to bring a friend to the next meeting in order to raise the profile and awareness of the network.

The next event is scheduled for 17 October.

Work on the establishment of an Economic Leadership Group has commenced with some initial meetings taking place to scope out potential members and the group's purpose.

Growing an Almond Opportunity



Earlier this year we secured funding on behalf of the Hawke's Bay region to assess the feasibility of establishing a NZ almond industry based on a premium product using sustainable agronomic practices. This project is a partnership between CHBDC, HBRC, Wairoa DC, Hastings DC, Picot Productions (Pic's), Plant & Food Research, local CHB grower Tony Kuklinski and the Ministry for Primary Industries.

During July we achieved a major milestone for the project with completion of three research/investigations focused on land use suitability and environment, stakeholder and consumer intelligence and economic feasibility.

The project team is currently working on collating the recommendations from these three reports and developing a fact sheet that will outlay key considerations for growing almonds. The collated report and fact sheet will be made publicly available on completion.

Jobs in Central Hawke's Bay - Turanga Mahi ki Tamatea

Local Jobs for Local People - the Jobs in Central Hawke's Bay team continues to support local jobseekers and employers to connect the dots and facilitate sustainable employment in our community.

This was highlighted with the recent closure of Te Mata Mushrooms (Havelock North), we were contacted by an employee based in Central Hawke's Bay who had recently lost his job there as a result. Connecting the dots, we were able to support him to find further employment within the week.



Business Connect Details

Total Business List	806
Business Connections	355
Has Attended a BA5	58
Coming to the next BA5	0
Businesses Connected this week	0
New Businesses Connected this week	1
New Business Connections in the last 30 days	9
Monthly Email Subscribers	663
Business Connections in last quarter	132
Business Mentoring Sessions (64 Total)	9

Growing Great Entrepreneurs

GGE Course Applicants	47
GGE Waiting List	13
GGE Course Completed	26
New Business Established	24
Existing Business Supported	5
GGE Mentoring Participant	26
Current GGE Participants	0



Connections continue to be made and our business database is growing with over **800** local businesses now recorded.

The start of August saw the third of four **Growing Great Entrepreneurs** courses start for 2022. We have 5 entrepreneurs learning what it means to start a business and ensuring they have the knowledge and tools to grow a successful business in our community.

To date we have supported 22 new businesses and 5 existing through the programme and hope to support many more.

The **Business Mentoring** program is having a fantastic response in the short time it has been active. We have used 9 sessions of the 64. We have had 6 businesses come through the programme so far with 5 having ongoing support. The feedback from the business owners has been incredible to date.

On Monday 22nd August we held a free Business Branding Workshop presented by Ella from The Concept Parlour. Ella has recently moved to Central Hawke's Bay from Haumoana and was interested in sharing her knowledge with our business community while creating an opportunity to spread the word about her business. We had 6 attend the workshop and all were well engaged and found the session very beneficial.

We have recently welcomed Bevan Trotman to our CHBDC team as the Economic Development Lead, Jobs in Central Hawke's Bay will work closely with Bevan to ensure we continue to contribute positive economic outcomes for our local community.

There is an opportunity for MTFJ to be involved in advocating for Fees Free Apprenticeship support continuing as this initiative ends at the end of 2022. Jobs In Central Hawke's Bay have been advocating at a regional level through the Regional Skills Leadership Group (RSLG) and MBIE. As MTFJ is centred around getting Youth through their qualifications and into industry jobs and through the work the rural districts are completing, they are best placed to advocate at a National level for its continuation.

Youth Transitions

For the month of August: 73 connections with Youth from our Student Pathway Survey with 87 Reciprocal contacts.

New Student Referrals : 105 students have completed the Student Pathway Survey this year.

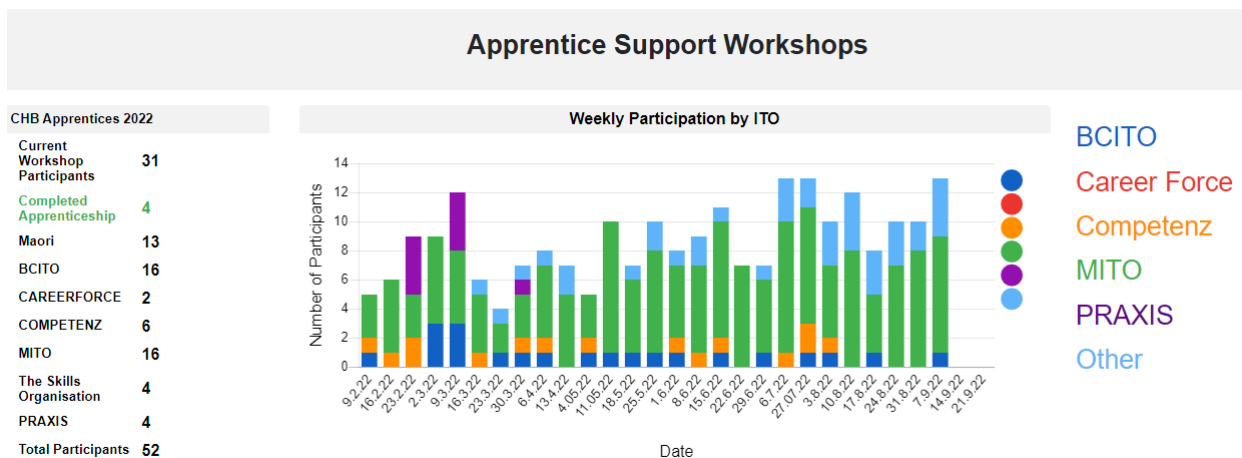
- Graduation of youth at the **Tu Te Wana** 16 week programme 5 August. Fantastic to see all the youth with their heads high and having options to stay on with Craigmore for employment or enrolled in other courses. The relationship we were able to build with the Craigmore team will continue to grow in the future as they were very positive to helping support our local youth and community.



- Have been able to assist the CHB College who will send 4 youth to the National Student Commonwealth Heads of Government Meeting (CHOGM) in Wellington in September, we look forward to hearing about what the Youth learn from this unique experience as they take on a Country and debate what is important for that Country.
- Continued support with CV and cover letters and building those important relationships with Year 12 & 13 students in the Inspire line.
- We have worked with the CHBDC Project Management Office to connect two council partners; Lowe Environmental Impact (LEI) and Beca to our local college to provide a new **Central Hawke's Bay Environmental Advancement Scholarship** <https://www.chbdc.govt.nz/our-district/economic-development/jobs-in-central-hawkes-bay/stories/story/887/central-hawkes-bay-environmental-advancement-scholarship> providing \$2000 for 3 years to a student wanting to train in the environmental field.
- Continued relationship building and being visible in the school and community is continuing to have parents, ex students and current students asking for support, whether it be linking for licensing support, CVs or conversations around next steps and jobs that are available.
- Awesome to have a family come in and support their 17 year old who wanted to build some confidence around interviewing for a farm cadetship. To see his confidence, grow in that hour always makes our role so worthwhile.
- Supported a visit to EIT Trades Academy with CHB College year 11 students so they could explore what EIT has to offer and looking forward to attending the Trades Academy in 2023. They were able to see first hand what services are available from hairdressing, animal care, automotive, building and construction as well as hauora and wellbeing.



Our [Apprentice Support Workshops](#) continues to be really valued by those attending.



See above stats for our weekly attendance this year. Congratulations our four apprentices so far who have completed their training – we look forward to celebrating with you at our annual [Mayors Taskforce for Jobs Trades Graduation](#) in November.

We are also in discussion with MBIE, RSLG, TEC and local employers around the cessation of the Trades Training and Apprenticeship Fund (Fees Free Apprenticeship) at the end of this year. We are concerned this will leave a gap in our skills training pathways – as there are still large shortfalls in the availability of trained/qualified tradespeople. Jobs in Central Hawke's Bay is advocating for further support to continue training to meet the skills shortages.

He Ringa Whānau Ora

He Ringa Whānau Ora continues to progress their kaupapa with whānau within Tamatea Central Hawke's Bay. The two kaimahi have now created a space in the Railway Building in Waipukurau so that they can enhance their interaction with whānau in a safe and private space. Due to savings made within the contract the programme end date has been extended from October 2022 to December 2023.

TOURISM

Spring Fling 2022

Ruataniwha Street in Waipukurau was abuzz with the launch of the Spring Fling and its first event, the Spring Market Day on Saturday 3 September 2022. Spring Fling was officially launch by Mayor Alex with her thanking event managers for their time in putting together spectacular events and encouraging people to get involved in the 17 events on offer. The Spring Market Day saw thousands of people flock to the closed off main street to see and purchase local goods from stall holders as well as visit businesses some of which offered special promotions. Local community organisations such as Violence Free CHB and Sustainable Ewe also had stalls to showcase the work they do. Food trucks were present to assist with feeding everyone and the Waka Tākaro was set up on the Greenpatch to entertain the kids. All in all it was a successful day and a great start to what is proving to be a fantastic Spring Fling for 2022.





DRINKING WATER

Drinking-Water Compliance

District Drinking Water Supplies

July and August saw another strong month for performance against drinking water standards. The team are actively working through year-end reporting on drinking water performance to be provided to new regulator, Taumata Arowai. Reporting under this new regime will be a first this year and the team are seeking to work closely with Taumata Arowai to ensure expectations and deliverables are clearly understood.

Operational update

Operational teams were challenged through July and August with continued high volumes of leaks as well as new connection work and routine maintenance / operations to complete. A significantly wet period has also hampered the ability of crews to complete some planned work and has drawn out timeframes in many cases.

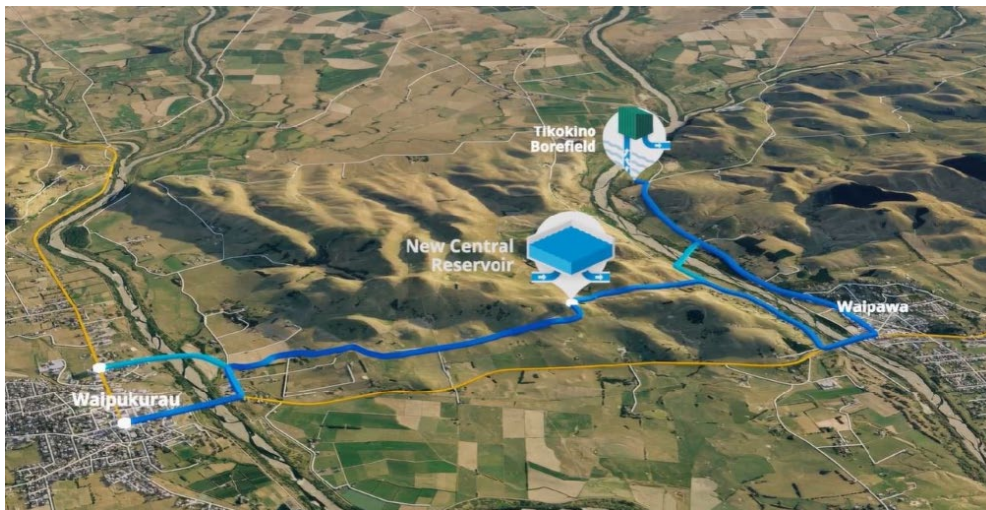
RFS responsiveness is trending upwards again and the team are placing effort again on bringing this trend back down.

A focus on new connections is being made with external contractors being looked at to complete works to ensure customer timeframe expectations are met. Our internal teams will look to work closely with any external contractor brought in to ensure cost and quality outcomes are not compromised.

Waipawa to Waipukurau Water Supply

In May 2022 council approved the project to progress to construction and a budget increase to \$15.8, with the river crossings to be confirmed in 2023 once relevant due diligence has been completed, officers are now finalising design sections, planning the construction sequencing, as well as finalising landowner agreements and consents required.

The access track to the new reservoir has been designed and will be issued as a work order to civil and pipeline contractors panel this summer. Watch this space over the coming months as the project progresses further.



Tikokino Mains Upgrade (Stage 2 and 3)

Tikokino Rd Stage 2 and 3 are now complete. The main contractor Russell Road is currently completing the last of the road repairs. The pipe bridge is remaining however will become part of stage 4 which will be contracted to the contractor panel.



Waipawa/ Otane Firefighting and Shortfalls (Stages 1-3)

Stage 1 and 2 are complete. Stage 3 Design is complete and will be one of the first projects completed by the highly anticipated panel. This will complete the project upgrading the main from Abbotsford Road to the bottom of Mathews Street.



Pōrangahau Rd Water Supply Upgrade

Fulton Hogan have made good progress on site over the last month. Site exploration and pipe welding has been completed for stage one, allowing for direction drilling to begin from Lake View Terrace through to Peterson Place. Site explorations are underway for stage two. Peterson place through to Gaisford Terrace.



SH2 Borefield Upgrade

A final issue with a pump is still to be resolved prior to decommissioning of the existing pump system, this is being progressed with the pump supplier. In addition, Council has resourced support from Stantec to undertake both a review of the design and investigation of the pump failure.

The University of Canterbury are undertaking metallurgy testing to determine the cause of the shaft failure. We have re-engaged with contractors to complete remaining works in consultation with the Operations Team, with the only outstanding item remaining the fixing and recommissioning of Bore B Pump.

The Borefield is currently running on 1 New Bore and Pump in conjunction with the Original Stage 1 Bore A Pump upgrade.

Kairakau Water Upgrade

Trility contractor is in full gear with the development of the new water treatment plant for Kairakau with 84% completion of fabrication and 60% of site works. Topline Contracting has successfully relocated two raw water tanks to its new location and cleared the site for placement of new water treatment plant building. This will take place in early November.

Trility engineering yard in Hastings continues with building construction and fitout, while Topline subcontractor is completing ducting and trenching and foundation works for the new building. Bore shed has been reclad and ready for fencing.

Commissioning and operational proven period is planned for November-January 2022.



Reservoir Renewal Programme

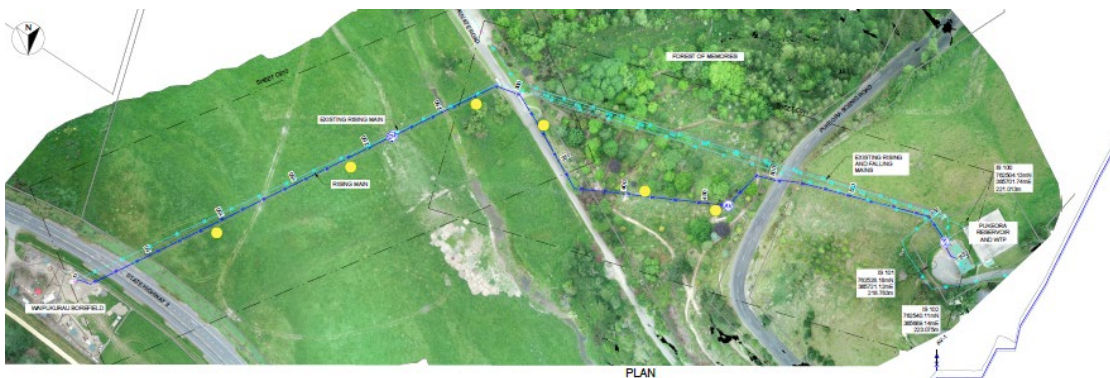
Abbotsford - Waipawa

Officers are in the early design and landowner negotiation phase of the plan to renew / upgrade the Abbotsford Reservoirs that supply Waipawa and Otane. There are no updates on this project in this reporting period.



SH2 Borefield to Pukeora Reservoir – Rising Main Replacement

Officers are finalising cost-benefit analysis of the alternative option, and the rising main replacement has been put on hold. While the replacement of the Pukeora reservoir (including the raising main) can only happen following completion of the new Central reservoir, the focus has now shifted to Waipukurau-Waipawa second supply and the construction of the Central reservoir and all interconnectivities.





WASTEWATER

Wastewater Treatment Operational Performance

The installation of the DAF unit at Waipawa, as well as improved operational practices, has continued to provide good treatment quality outcomes. TSS, DRP and E-coli results remain promising. Heavy rainfall, and high I&I levels, have hampered overall performance with pond levels remaining high and managed emergency overflows being utilised a number of times.

The Waipukurau balance pond performance continues to remain challenging. Dissolved Oxygen levels (a key indicator of pond health) have improved due to a large amount of work completed by the team, but this pond and the overall plant performance remain being closely monitored.

Wastewater reticulation performance

High I&I levels have been highlighted with the ongoing periods of heavy and consistent rain. In many parts of our reticulation networks (particularly Waipawa), the networks are at or near capacity.

Inflow and Infiltration Management

Stormwater and wastewater system modelling has provided recommendations informing this programme of work, to identify and remediate wastewater and stormwater defects. This programme of work is underway with manhole repairs, pipe relining, jetting, flow monitoring and CCTV. A major contract was awarded to Pipevision for the investigative works, with larger scale renewals following from their recommendations. A quarter of the network has currently been investigated; 18 kilometres of pipe and 250 manholes. Renewal prioritization follows from here as well as detailed investigation.

Waipawa, Waipukurau, Otāne Wastewater Upgrade Project

The opening of the Otāne to Waipawa conveyance pipeline and pump station was held on 18 August, marking a significant milestone in the WOW programme. Planning of upcoming projects for this financial year is progressing well while continuing to further define and develop the long term solutions to move to a centralised treatment plant and away from current surface water discharges. Details on current projects below:

Otāne to Waipawa Pipeline (Stages 1, 2, 3 and 5)

The Otāne to Waipawa wastewater pipeline is complete with all the approximately 9km of pipeline in the ground across Stages 1, 2, 3 and 5. Final reinstatement works are still being carried out along the pipeline, the weather continues to impact the ability of the contractor to finish these small pieces of work, although none affect the use of the pipeline itself.

Otāne to Waipawa – Pump Station (Stage 4)

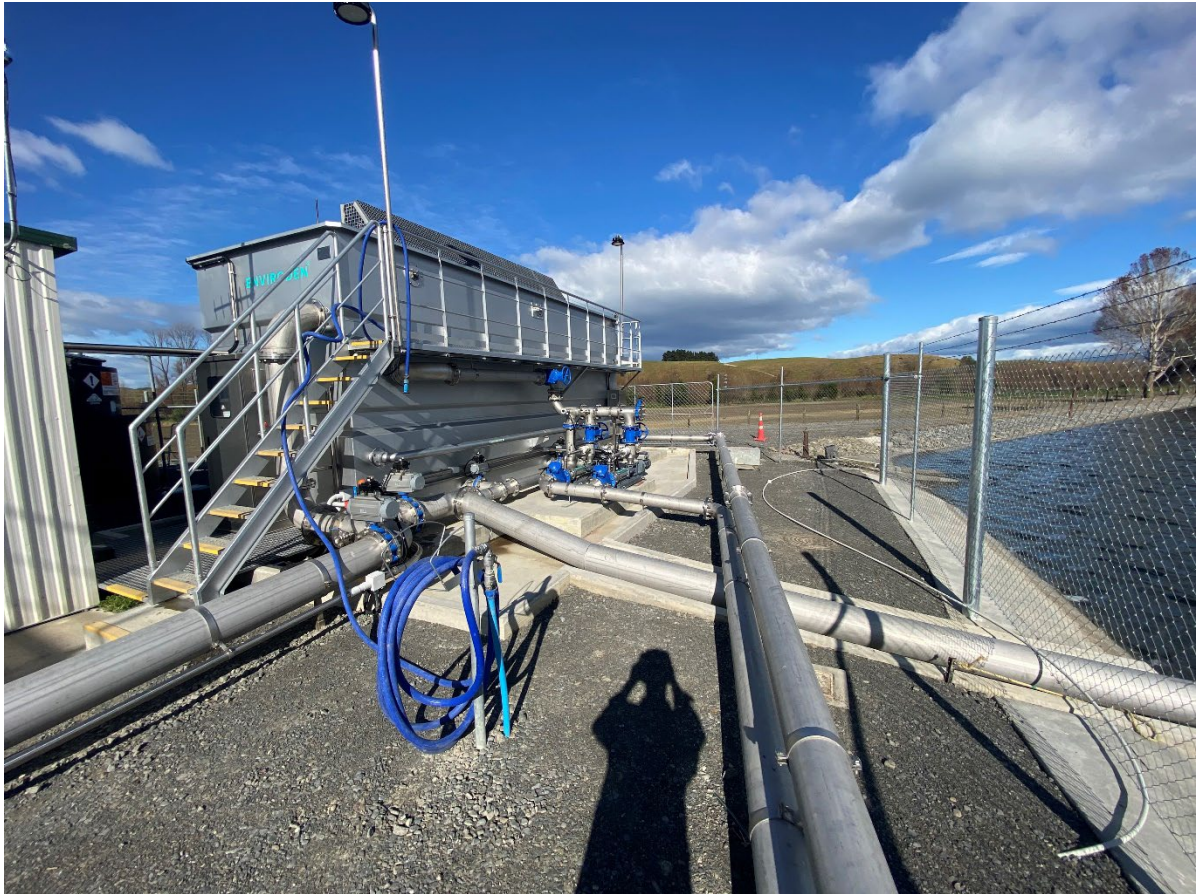
Similarly to the conveyance pipeline, some final minor work is required to fully complete the Otāne Pump Station, the majority of this work does not affect the ability for the Pump Station to operate however.

The commissioning of the Pump Station and pipeline into full operation has been slightly delayed due some small electrical issues that require remediation before running the pumps in automatic.



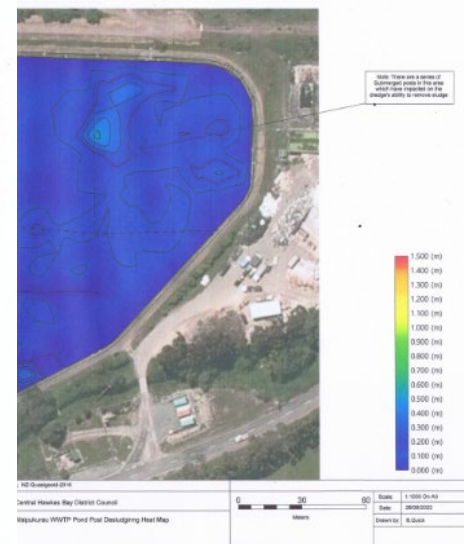
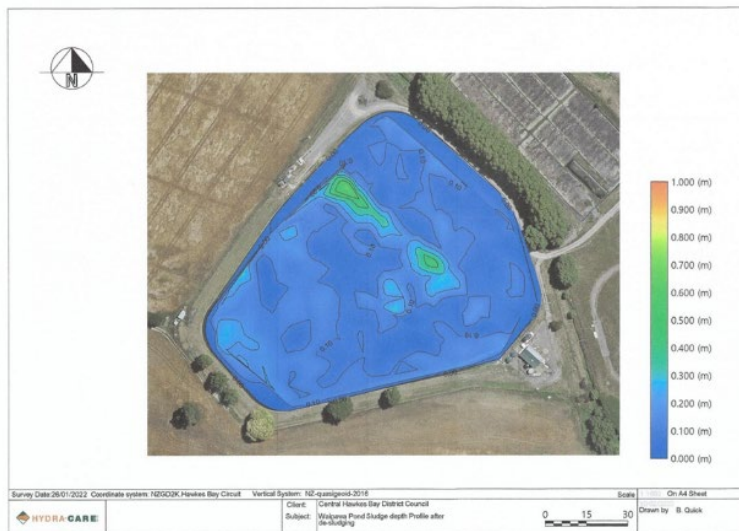
Waipawa & Waipukurau WWTP Short term Improvements

We are now two months into the operation of the DAF unit at the Waipawa WWTP, providing customized and optimized tertiary treatment. This system effectively takes the place of the non-performing lamella clarifiers. Weekly samples are taken to monitor the DAF's performance and have shown very positive results with Suspended Solids and Dissolved Reactive Phosphorus samples now consistently within consented limits, through the improved water clarity we are also seeing improvements from the UV treatment process efficiency with e.coli readings also within consent limits post DAF treatment. This work is occurring alongside and to complement the longer-term upgrades.



Waipawa and Waipukurau WWTP Pond desludging

Hydracare have completed the desludging of the oxidation ponds at the Waipawa and Waipukurau WWTP's with 1905



dry tonnes of sludge removed from Waipawa and 1506 dry tonnes removed from Waipukurau.

Waipukurau and Waipawa WWTP – Pond Waveband Remediation

Waipawa and Waipukurau WWTP have been completed with the construction of a rip rap bank (including placement of geotextile fabric, a new concrete nib, and placement of rock). Stairs to all sampling locations were also installed to improve operator safety while sampling.

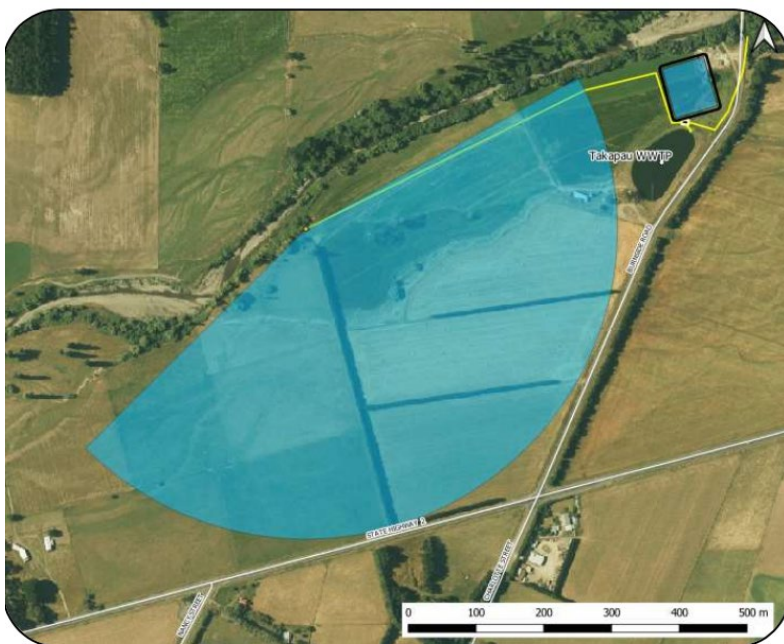
Waipawa Wastewater Resource Consent

An application to change the existing resource consent conditions of the Waipawa wastewater discharge consent to enable the inclusion of flows from Otāne was granted and issued by HBRC at the end of June. This consent variation has now been issued by HBRC enabling the conveyance of treated wastewater from the Otāne WWTP through to the Waipawa pond for further treatment and then discharge.

Takapau Wastewater Upgrade Consenting Project

The consent for this wastewater upgrade was publicly notified in late 2021. Pre hearings took place in October and November 2021 and most recently on 28 June 2022. CHBC anticipates consent will be granted later this year.

Engagement with mana whenua on opportunities for collaboration during the project continues. Concept designs are on track to be completed by the end of September. Procurement for irrigation is the next focus for the project. An information sheet with detail on the project (along with other Takapau projects) can be found [here](#).



Pōrangahau and Pōrangahau Beach Wastewater Upgrade Consenting Project

Resource consents for Pōrangahau and Pōrangahau Beach wastewater treatment plant upgrades were publicly notified on 14 April and submissions closed on 17 May 2022. Eight submissions were received. Submissions were received from five groups from four groups, Ngāti Kere Hapu Authority, Ngāti Kere MACA Working Party, Rongomaraeroa Marae and Te Toro o Punga RMA Unit and Hawke's Bay District Health Board. Submissions are accessible on Hawke's Bay Regional Council's website ([Hawke's Bay District Health Board](#), [Ngāti Kere Hapu Authority](#), [Ngāti Kere MACA Working Party](#), [Rongomaraeroa Marae and Te Toro o Punga RMA Unit](#))

The first pre-hearing meeting was held on 27 June 2022. Council is working through a few more items that relate to river health, management of potential wetland areas and nutrient concentrations and anticipates a second prehearing to be scheduled by early October.

You can read more about the project [here](#).



Rongomaraeroa Marae wastewater connection

Following approval of funding from the Tourism Infrastructure Fund (TIF) at the end of June, Council has been engaging with Marae Trustees and beneficiaries on plans to connect the Marae to Pōrangahau's wastewater system. Concept designs and pipeline routes are currently being discussed. Next steps include satisfying TIF preconditions.



STORMWATER

Stormwater Operational and Compliance update

Consistent rain has resulted in a number of stormwater callouts across the district. In most cases, the team are working to understand and resolve (or help resolve) private stormwater issues either brought on by existing natural or man-made flow paths, or more recent issues caused by new development. Often these situations involving private residents are complex with the involvement of private / common law, network performance and constraints and the complexities of development and consenting processes.

In July, Council were issued 1 abatement notice and 1 infringement notice (for \$750) for breaches of its district-wide stormwater resource consent by HBRC. The notices related to an isolated wastewater overflow in the reticulation network in Waipawa in February 2022. While the overflow involved Councils reticulated wastewater network, the notices sit against Councils Stormwater consent as the impacts are on stormwater drains and associated effects to freshwater. The overflows were fully investigated with a pipe blockage due to root intrusion being found as the causing factor and the downstream impacts on freshwater were measured and found to be minimal in the nearby drain and non-existent at the drain outflow to the Waipawa River.

Stormwater Catchment Management Plan

Central Hawkes Bay District Council is currently commissioning an overarching stormwater catchment management plan which will outline the direction of stormwater management for the district. Working with project partners Stantec we are liaising with internal stakeholders to help capture problem areas, risks, and opportunities for future upgrades. We are aligning this plan with the results of the recent hydraulic modelling work as well as the stormwater improvements outlined in the Long Term Plan. A draft version has been reviewed, with an 80% draft expected mid September.

Waipawa/ Otane Stormwater Model

The model build and calibration for Waipawa/Otane is complete. Recommendations to service development, future growth, network performance and environmental impacts have been developed. Integration of these within the Catchment Management Plan is underway. Workshopping with key users is ongoing with recommendations and further

scope planned for implementation. Culvert maintenance to allow survey to improve the model is currently being procured.

Waipukurau Stormwater Model

A hydraulic model update is being undertaken by WSP, an initial network walkover was undertaken in December, topological survey of manholes, pipes and open drains has been completed and the model is being built. The hydraulic model will assist in development planning and identifying problem areas. We are also working with HBRC to include lake Whatuma in the scope of this work to give some idea of where development can be undertaken and to increase our understanding of the impact of lake levels after storm events. Integration of the findings of this work within the Catchment Management Plan is underway.

Takapau Stormwater Model

A hydraulic model for the stormwater network in Takapau is being scoped by WSP.



LAND TRANSPORT

Summary General

This agenda contains a separate report on land transport noting the considerable challenge and scope of operational issues across the network due to the long-standing weather issues impacting the network. There are three projects underway to address the issues including:

- An operational review for quick fixes and operational improvements
- A specific focus on remediating slips
- A Strategic Review of the Land Transport Activity in advance of preparation of the Activity Management Plan for Land Transport

We will continue to report progress to Council and community on these key projects.

Maintenance

Our local contractor has been busy regular maintenance such as grading, pot-hole patching, street sweeping and drainage work. During this time there have been numerous areas across the district where slips have developed due to the continuous rain that the district has experienced since June. The hill sides have become saturated with water which is causing a lot of movement impacting our roads. Some areas have detours in place and are now single lane priority such as Elsthorpe Road, Cooks Tooth Road and Wimbledon Road pictured below



Elsthorpe Road at 14km mark



Cooks Tooth Road at 7.5km



Wimbledon Road at 1.3km

March Storm Response

The smaller sites that were damaged during the March 2022 weather event have been repaired and 2 lane traffic restored. There are still several sites which require final design and construction. At the moment these sites are too wet to access safely to complete repairs so work will begin in the summer months .



Farm Road at the 12km mark

Reseals

The pre-reseal work has continued when weather permitted and designs for next year's re-seals are underway. It is anticipated that with the weather we have been experiencing the programme will begin late November

Bridges, Structures and Area Wide Pavement Treatments

Work on Nelson & Reservoir Street has been completed

Work has begun on the sealing of the remainder of Kyle Road. This has been hampered by adverse weather but will be completed in the 22/23 fiscal

Investigations into Woburn Road to determine if it qualifies as an AWPT has begun and if it meets the qualifications will part of the 22/23 programme

Work is in the planning stages for repairs to the Makaramu Bridge which accesses Te Paerahi.

Footpaths

Footpath Maintenance and renewals across the network is being programmed for the 22/23 fiscal.

We have discussed the construction of a new footpath with the Otane School who have referred the matter to the Ministry of Education to determine if we can either purchase or have an easement over their property to construct a footpath

Other Works

Work is progressing on the Single Stage Business Case for Porangahau & Wimbledon roads (old SH 52) with support and input from Regional Waka Kotahi staff.

Working with Stantec we are refining our prioritisation methodology to ensure the correct works are being done across the network. We are also working on

Road to Zero and Low Cost / Low Risk projects are being designed and will be actioned as funding allows

Work is progressing with quantifying the size and cost of the slips that have happened over the winter months, some of which are noted above. A business case is being prepared to apply for funding assistance from Waka Kotahi for this work as it does not by right qualify for extra funding

Kairakau Road Rebuild – Higgins

The early stages of earthworks to prepare for the new road foundations have started however the recent weather has been severely affecting progress with the effects of the weather still evident many days following the actual rainfall. The lack of productivity caused by the impact of rainfall has meant that work on the site was ceased for a short period at the end of August/start of September. Some work onsite has recommenced with the ability to start on a culvert relocation, full earthworks operation will recommence as soon as the weather conditions make that feasible. We continue to work with the contractors to ensure progress is efficiently achieved with the view to deliver the new road before Christmas 2022., the ability to achieve this remains a risk with any time contingency having been lost due to the poor weather and ground conditions. The delays and loss of productivity will also affect the ability for this project to be delivered to the original budget.



SOLID WASTE

Waste Free CHB

Waste Diversion

Green waste, scrap metal, e-waste, tyres, and recyclables from agriculture waste continue to be diverted through diversion options at our transfer stations.

Staff have been working with Hawkes Bay Regional Council to find solutions for turning green waste to compost. A trial where HBRC shredded accumulated green waste, to be turned into compost to support local native planting initiatives appears promising. Early indications show that this arrangement is a 'win-win' for both parties, removing the need to get out of district contractors to process the material into compost, providing some operational cost savings.

Keep New Zealand Beautiful Week

Planning is underway to organise a Council led community clean up event on SH2 between Waipawa and Waipukurau to kick off the nationwide Keep New Zealand Beautiful Clean Up week. With the assistance of Waka Kotahi, Higgins, Downers and other various partners, we have managed to get the SH2 closed on the Sunday, 18 September 2022.

Volunteers from the community with oversight from CHBDC staff will then assist in collected litter from the roadside and take the opportunity to highlight the Keep New Zealand Beautiful and Be a Tidy Kiwi message. The event will culminate in a BBQ for volunteers at Russell Park as a way of saying thank you to those who participated.

As part of the week, we are also requesting members of the public nominate themselves as street champions. Street Champions will be handed out a litter collection pack and can organise a local litter collection event within their own street. Street champions are encouraged to post pictures of their efforts online where they will have an opportunity to win prizes.



WMMP Action Plan Priorities

The programme for CHBDC Waste Management and Minimisation Plan (WMMP) Action plan for the next fiscal year will focus on the following priorities:

- Continue to focus and where possible, expand waste minimisation education programme at schools.
- Support initiatives that encourage individuals, households and small community groups to divert green waste and food waste through small scale or home composting opportunities.
- Increased public awareness around our kerbside recycling – where it goes, what happens to it and what it ends up as.

Waste Minimisation Education

Council renewed its commitment to support the enviroschools programme, the zero-waste education programme, and the paper to trees programme for the schools.

Our investment in the enviroschools programme is bearing fruit as Omakare School was awarded the silver status. Officers attended the celebration on the 22nd August 2021 and were impressed with the efforts the students and staff go to ensure that most of the waste the school produces are recycled, reused, or diverted from landfill.



Food waste and green waste from school grounds turned into compost for a vegetable garden.

Green Waste Diversion Initiative Programme

Officers have tentatively set dates to run composting workshops linked to the zero-waste education programme. As composting lessons are completed at each school, we are proposing to run composting workshops on the weekends. We are incentivising those who attend the workshops by providing composting bins to those who are willing to give it a go for free. We have tentatively booked 2 workshops in Elsthorpe and Waipukurau in the month November.

Increasing awareness around public place recycling.

Officers have discussed the possibility about creating an educational video detailing where recycling material goes once it is picked up at the kerb. Officers exploring a regional approach to this as all Territorial Authorities in Hawkes Bay are using the same service provider. This approach should see some cost efficiencies and ensure the messaging is consistent within the wider Hawkes Bay region.

Kerbside Recycling and Refuse Services

Kerbside Refuse and recycling services continue uninterrupted. Staff shortages due to illness has meant that there is some backlog in the processing of recyclables, but the contractor has managed this by prioritising staff to complete the kerbside collection.

A new collection truck has been commissioned. The truck will be used to collect kerbside glass and refuse. CHBDC branding has been included on the truck to further promote the waste minimisation message.



Waipukurau Transfer Station Weighbridge

The PMO is in the process of procuring a new weighbridge for the Waipukurau Transfer Station. A new weighbridge will allow CHBDC to have actual weights and accurate data on the types and amount of the waste the district is producing. This data allows the Council to target effective waste minimisation initiatives and track waste diversion. A survey was conducted end of June/start of July 2022. The desired outcome was to give users the opportunity to voice their opinion, be heard and for the CHBDC to understand what the site is currently used for. We felt the survey met its purpose and that we gathered appropriate information to move forward with this project. The weighbridge tender was released on the Government Electronic Tender System (GETS) on the 25th August, closing on the 20th September.

CONSENTING

Consent application volumes for 1 July – 31 August 2022 reporting period

Building Consents:

- Total consents: 71
- New dwellings: 17
- Total value: \$8.04M

Overall consent volumes remain high but a reduction in the volume of consents for new dwellings is being experienced. Inspection volumes remain very high with the team of inspectors running at full capacity to keep on top of demand. Beyond the high volumes of consents in the system, the complexity of many consents remains a challenge in many cases.

In November 2022 Council will again go through a routine accreditation process with IANZ. When last assessed (in 2020) Council received high praise and commendation from IANZ and will again hope to achieve this in 2022.

Councils Online Portal for building consents is now live and is being heralded a huge success with significant efficiency added to the consenting process and greater visibility and confidence resulting in much-improved customer experience outcomes.

Council continue to push for the continued development and education of its consenting team with 2 cadets currently working through formal qualification processes and a 3rd to start studies early in 2023.

Resource Consents:

- Total consents: 37
- Number of new lots to be created: 116

Resource Consent volumes remain steady but with a high degree of complexity through either large subdivisions or subdivisions with complex infrastructure/engineering requirements.

While lacking a Consents Manager (recruitment underway), Council continues to rely very heavily on the use of external planners and an expert team of RMA specialists to drive our subdivision consenting function. While not considered a long-term option, Council is confident that the partnering approach it has in place with its support partners is resulting in good quality and cost-effective outcomes for customers of the consenting process.



EMERGENCY MANAGEMENT

Hawkes Bay Emergency Management

The IMT Leads recently held their quarterly meeting where the file structure for the Emergency Management documents were shared with the team along with instructions for use in an emergency.

The IMT will be undertaking CIMS 3 training and a function exercise within the next month. This is training for everyone to understand their roles and responsibilities in an emergency.

Emergency Management Advisor Paula responded to the Nelson/Tasman floods recently where she was an Operations Manager. It was a valuable experience and lessons were learnt which will be useful for further preparations in Central Hawkes Bay.



PLACES AND OPEN SPACES

Places & Spaces for a Thriving Future

Following the adoption of the suite of Thriving Places and Spaces strategies on 7 July, 18 July saw the closing of the 60-day consultation period for the Central Hawke's Bay Reserves Management Plan and the Sport and Recreation Facilities Plan. A total of 94 submissions were received. The focus has since been on preparing for the deliberations hearings to be held in early September.

Vandalism

Parks and public toilets and other community spaces have seen an increase in vandalism. This is a combination of graffiti and damage. Public toilets receive everything from vivid markers to mini fires, to wanton destruction of large toilet roll dispensers, toilet lids, and even cisterns. A'deane Park, identified in the draft Reserves Management Plan as needing new toilets in a more visible location, has seen so much damage over time that one toilet has been closed up as 1). Damage will reoccur and 2) cost to repair is not wise considering age of toilets. One toilet is still open for the time being.

The goal is to receive early reporting, remove tags, and repair as soon as possible to minimise lack of access to public.. Working closely with Police and Centralines Sports Complex staff, and by identifying time range of vandalism means that as few offenders have been caught on one of cameras in the vicinity. In some cases offending youth have been involved with the graffiti paint outs.

Parks Works

In autumn broadweed was sprayed in Russell Park. This left unsightly patches but was necessary prior to reseeded which was done in late August. Thankful for rain this will help turn Russell Park back into its glorious green fields. Canon irrigation is planned for dryer summer months to maintain the grass cover.

Nelly Jull has had a history of poor drainage and with all of the 21-22 rain something had to be done. Last year a new section of Novacoil was installed. This was a minor improvement, but the older Novacoil had failed and the gravitational slope was not sufficient to remove the excess moisture. Recent works replaced the older Novacoil and installed a new and lower sump. As soon as this was operational water began pouring out of the park into this sump. Each work area was reseeded to get growth underway to try and get as much reinstated prior to events like Duck Day on 8 October.

CHB Theatre

Similar to the new accordion door at entrance to Council Chambers, CHB Theatre now has this sound inhibiting door between the auditorium and the chambers meeting rooms. This has proved successful in being able to have two events run simultaneously at the theatre.

Libraries

It is BAU in the libraries. Programmes are up and running for all age groups. Waipawa Primary School continues to use the Waipawa Library as their school library. It is back to normal with classes visiting the libraries at least once every second week.

NZLPP funding finished at the end of June 2022. Although existing staff that were seconded under this funding have gone back to their normal hours, some of the programme including digital, He Kura Kainga and outreach activities/services that were part of the programme we have continued to run with less staff hours.

The Senior Citizens visited Te Huinga Wai in August. We talked about the different services that we offer including the library services, AA services, Information Centre and Council Service Centre services. We then played two games of Kahoots which was very competitive, ending with afternoon tea. They were very impressed with the facilities, with plans for a second visit.



Newsbank Access New Zealand. Newsbank provides digital access to a wide range of online newspapers, including the CHB mail and other New Zealand news sources, the smaller regional papers are text only. These news sources can now

be accessed from within the library or at home, all you need is your library card and a pin number. This has been funded by NZLPP in the last of our funding which is providing e-Resources for our community. This funding also includes an annual subscription for ReCollect.

E-Resources. There has been a steady increase in the number of people signing up to use the Libby app. This allows borrowers to access e- books.

The lunchtime Friday visits to the libraries by the JPs are proving popular, with the demand steadily growing.

Talk digital drop-in sessions continue to be utilized by the community. This programme has also been taken advantage of by community organisations sending members that are new to the digital world. These people have a weekly half hour session with one of the librarians. Some of the things covered in these sessions is using mobile phones, how to email and writing documents and saving documents.

Winter Reader programme started in July. This is run through the schools of Central Hawke's Bay. It is run for 8 weeks with librarians visiting each school twice to check the children's booklets. There are over 1100 children enrolled.



After school programmes. Crafternoons and DigiPlay continue in the libraries again this term. These programmes run from 3.30pm -4.30pm one day a week at both libraries. Arty Creatives is held at Te Huinga Wai on a Tuesday.

The Repurposed Remnants programme run in conjunction with the Community Op Shop and Sustainable Ewe, which is held on fortnightly on a Monday in Te Huinga Wai and Thursday in Waipawa Library is proving popular with people who are keen sewers, or just happy to cut the squares. These people enjoy the social gathering, over a cuppa and doing something purposeful for the community.

Streets for People – Waipawa Main Street

Waka Kotahi has approved Streets for People funding to Central Hawke's Bay District Council for all five interventions to improve the safety and connectivity of Waipawa's main street. The five projects approved are:

- Traffic calming interventions into Waipawa
- Improved walking and cycling connections across State Highway 2
- Improved walking and cycling connections at key intersections
- Improved access to Madge Hunter Park and Centennial Memorial Swimming Pool

Testing cycling options on State Highway 2.

Council will now start work on five Streets for People projects along Waipawa main street, building on what we have heard from the community, and will continue to engage with local business owners and residents as the work proceeds over the next two to three years.

A codesign group will be established by mid-September. As a key voice for the community, the codesign group will dive into three workshops and provide advice and recommendations to inform design across the five projects.

Following on from the Walk and Talks held in June, Council also launched a survey soon to collect further community thoughts on how we can make Waipawa's main street better.

Further information on this project can be found on Council's website – [Streets for People project](#)

Waipawa Streets For People.

Lets build on what we've heard from the Waipawa community.

'Slow the centre'

'See the highway as a hero'

'Pride in our environment and our people'

Projects

- 1 Slower Speeds in the Town Centre - Traffic calming interventions into Waipawa
- 2 Improved Walking and Cycling Connections Across SH2 - 3x Raised tables build outs and bike parking
- 3 Improved Walking and Cycling Connections at Key Intersections
- 4 Improve access to Madge Hunter Park and Centennial Memorial Swimming Pool
- 5 Cycling on SH2 - Testing Cycling Options on SH2



HEALTH AND SAFETY OVERVIEW

Council's Health and Safety function remains focussed on a number of internal initiatives to mature and lift the approach to Health and Safety across the organisation.

Critical Risks remain a top priority for the organisation, requiring collaboration across all divisions of the organisation. The first workshop with Portfolio Leaders was held and progress is underway in developing critical risk control standards to describe the system of work and resources needed when work is exposed to a critical risk.

Our training for key staff in the use of our reporting system RiskManager was undertaken and the collaboration between Health & Safety, IT, Analytics and Learning & Development will be pivotal in progressing the capabilities of this system. Development of staff training plan is underway with H&S Advisor and IT. Training will be rolled out to our H by the end of October to enable them to support the continued rollout to the wider team and in turn be our subject matter experts on the ground.

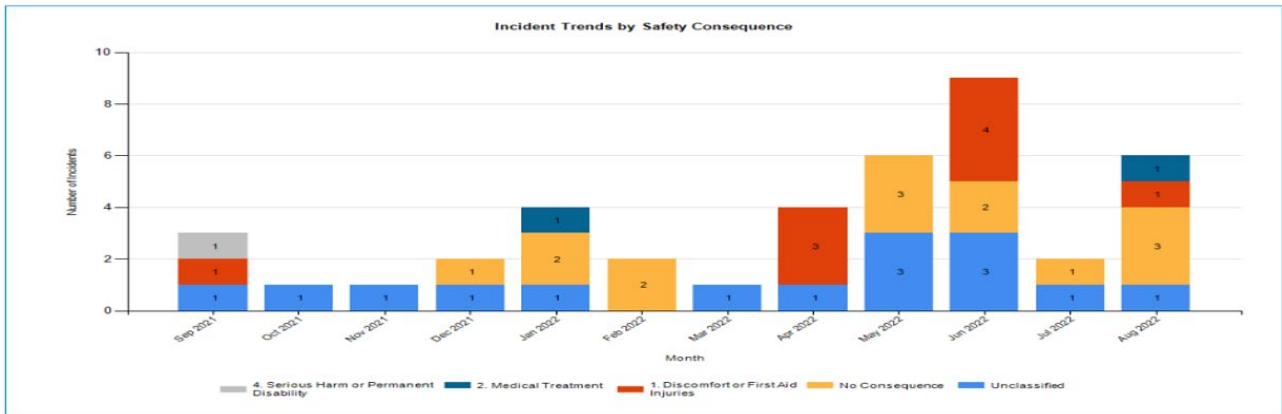
The Health, Safety and Wellbeing Committee continues to progress well with enthusiasm and commitment from our Health & Safety Reps to . Many of our reps and committee members will be attending the Health and Safety Representative roadshow being hosted by New Zealand Institute of Safety management (NZISM) this month outlining the capabilities HSR need to confidently contribute towards healthier, safer outcomes in the workplace.

A highlight in July being able to attend the Health, Safety and Wellbeing Summit in Auckland with the People and Capability Manager and Health and Safety Rep. This summit provided reassurance that we are on the right track. In the Health and Safety space, emphasis was placed on critical risks and in particular vehicles and the value for scheduled critical sweeps and going out to where work is done and learning from the workers who are the experts doing the job and involving them in any planning.

Another highlight has been seeing a holistic approach to Health and Safety by our people for our people. We have great leadership at all levels of our organisation who are the experts in what they do and proactively work to keep **all** our people safe. A monthly Health & Safety Award has been introduced to recognise and celebrate this great work. Debbie Thomas and Kawhena Abraham were the first recipients of this award.

Contractor engagement and reporting is continually improving as we work with our contractors to get a better understanding of the hazards that align to their critical risks and work towards standardising our reporting system across the board. Key statistics provided through routine contractor reporting are provided below

Reports	March	April	May	June	July	August	Trend
Contractor Hours	16,372	11,307.5	13,704.9	17,527	13,208.08	13,799.6	↑
Contractor Events	67	78	78	121	77	54	↓
Contractor Incidents	3	4	11	11	2	2	↔
CHBDC Reports	1	4	6	9	2	6	↑



Covid-19 Internal Health Response

CHBDC will be following the governments advice following the announcement of the removal of the Traffic Light System and review again in October. There is no longer a requirement for CHBDC staff/contractors/consultants and our community entering our facilities to wear a mask. We ask that respect is shown to anyone who may still choose to wear a mask.

Only COVID 19 positive individuals are required to isolate for 7 days. Household contacts no longer need to isolate but are asked to undertake a daily rat test before going about their daily life. This will mean that any staff that are household contacts will need to test before coming to work.

We continue to promote healthy habits and encourage staff to remain home if they are sick and to take a RAT test if they have Covid-19 symptoms.

Our RAT testing programme will remain in place for staff for those who wish to continue. We still have air purifiers in place and will review the use of these going forward in line with risk from the current flu virus. Hand sanitisers and masks are still in place for staff along with surface sanitiser.

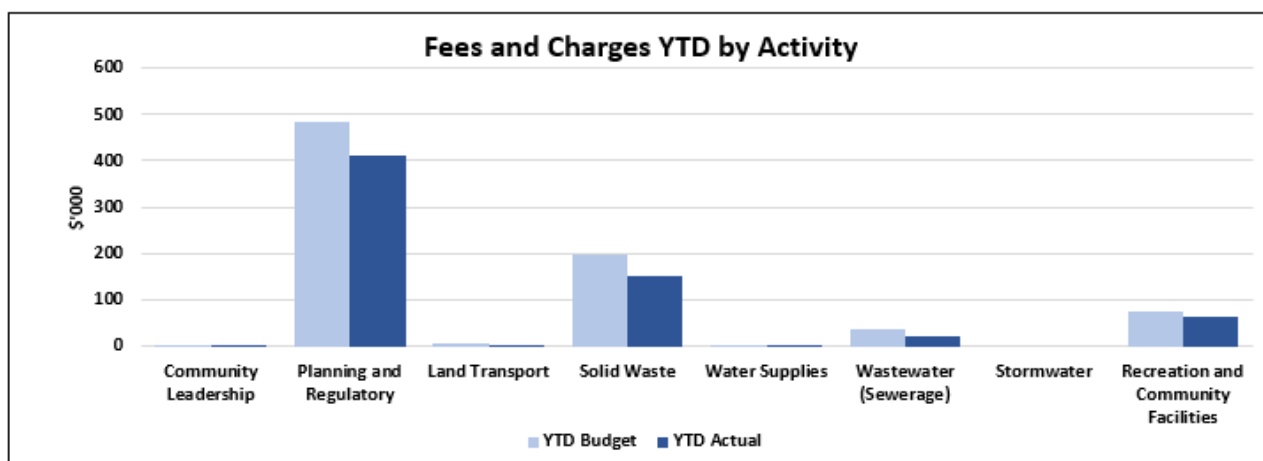
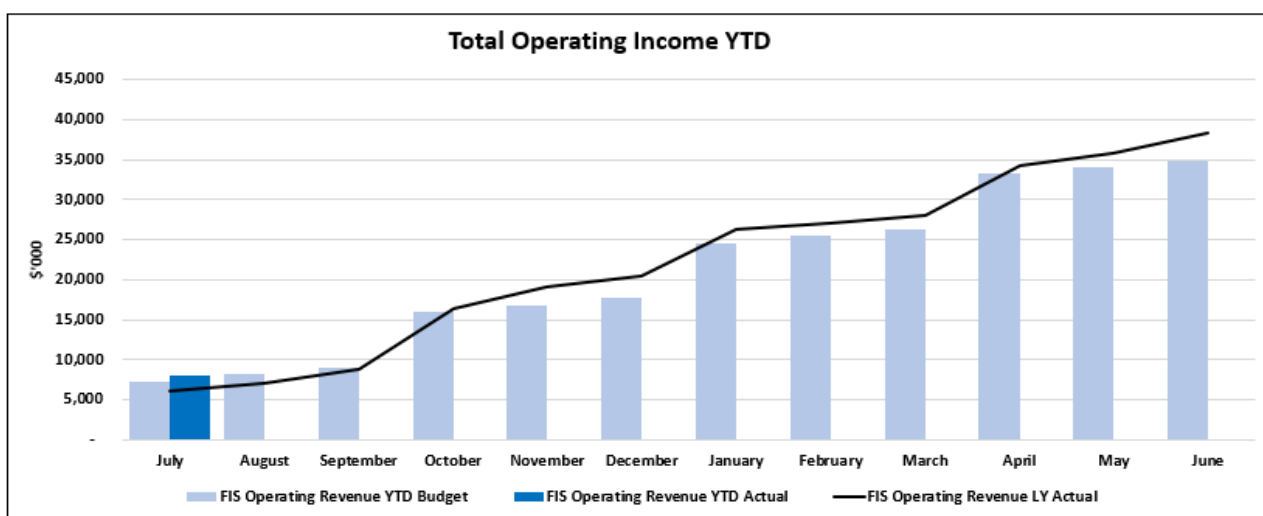
Financial

Performance

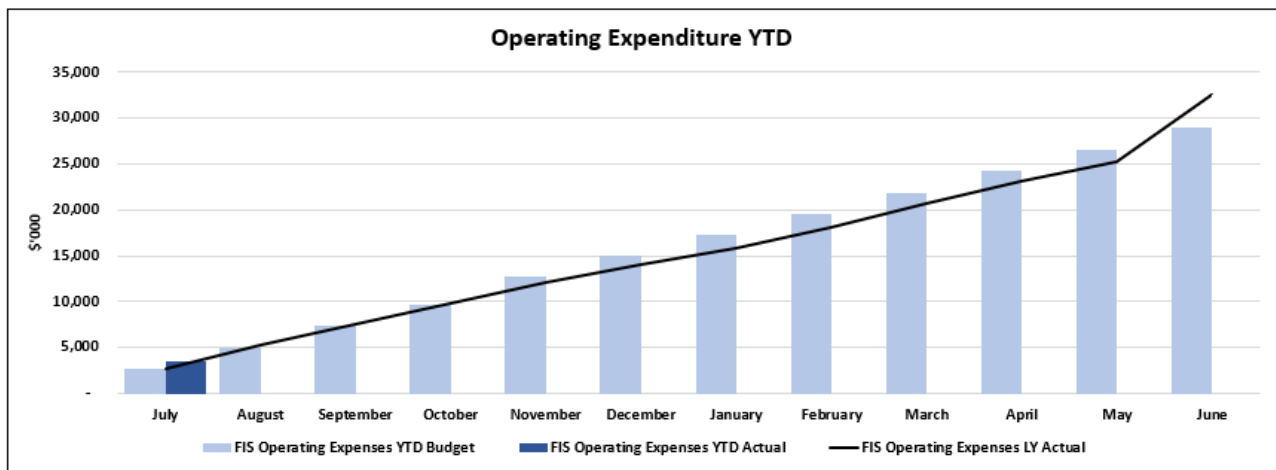
FINANCIAL PERFORMANCE ENDING 31 JULY 2022

The graphs and tables below show the financial results for Council covering the financial results for the 1 month ended 31 July 2022.

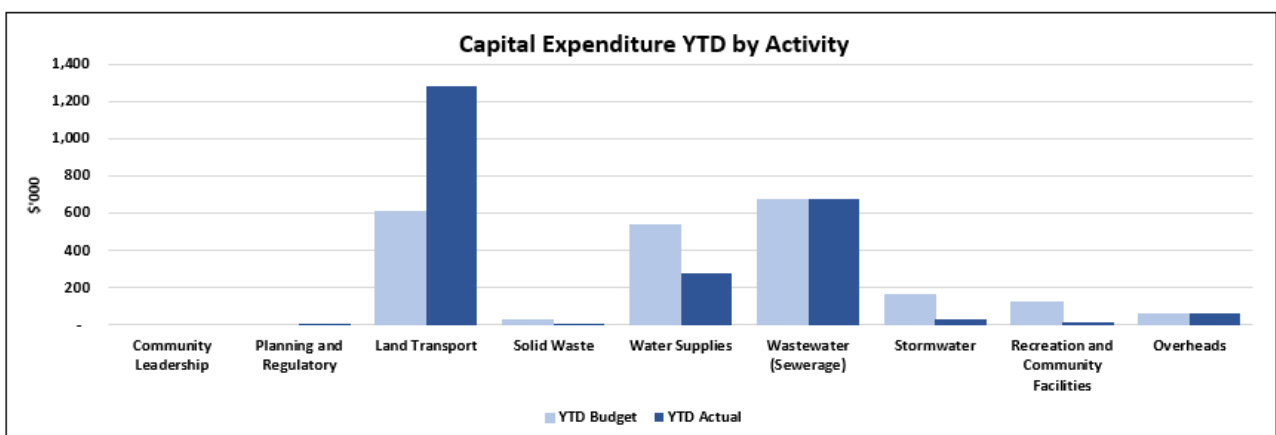
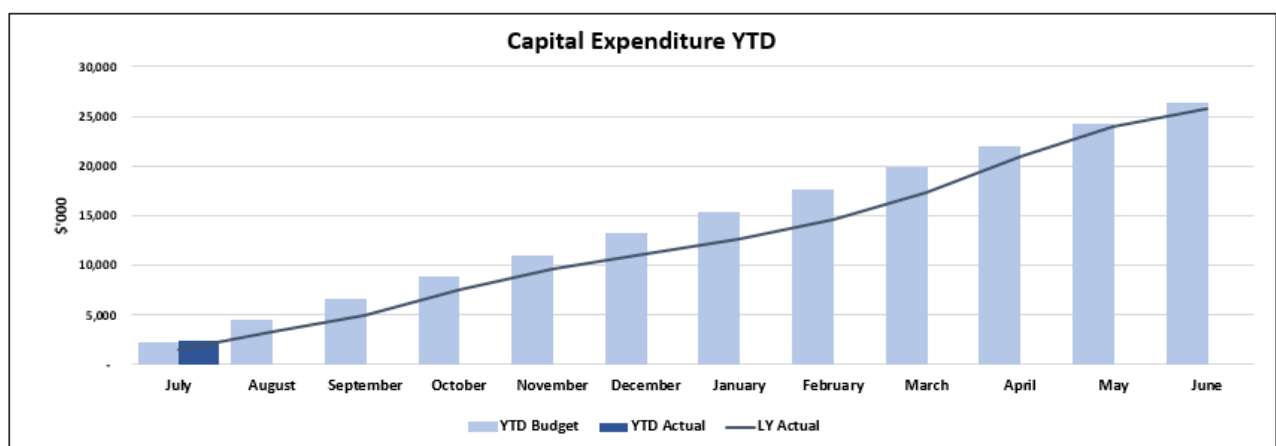
Council has just begun the new financial year. At this stage it is too early to gain much in the way of meaningful trends, and some of subsidies recorded in the income statement were actually grants received (banked) pre July, but are being spent in the current year.



Operating Costs are ahead of budget with the continuation of Economic Recovery projects and the Rooding Emergency Reinstatement works all carrying on from the pre-July.



Capital spend is running ahead of budget, particularly in the land transport area due to the Kairakau Road realignment and weather emergency reinstates.



#the BIG. Waste Water Story

#the BIG. Water Story

#TheBigWaterStory programme of work, and the **Waipukurau Second Supply** received a decision in May 2022. With formal landowner agreements near completion, most pipeline and reservoir due diligence complete. A consent has been granted for geotechnical investigations for rivers crossings and, following receiving of the results, options will be assessed. The production bore drilled and tested, and replacement of the AC main out of the bore-field (tagged as Stage 1) is complete. Stage 2 and 3 is well underway with approx. 2.4km complete.

Alongside the Waipawa and Waipukurau project upgrades – works are underway on planning of the reservoirs upgrades and replacement – with the Waipawa reservoirs proposed to be replaced and upgraded first. Landowner negotiations and design for these near completion.

Significant mains upgrades have been completed along Tikokino and Abbotsford Roads as part of the firefighting and Waipawa to Waipukurau Water Supply project. Porangahau Road has made good progress with direction drilling underway for stage 1.

The **Kairakau Water Supply Upgrade** is progressing well with site works and offsite fabrication aiming for water treatment plant delivery on site early November 2022.

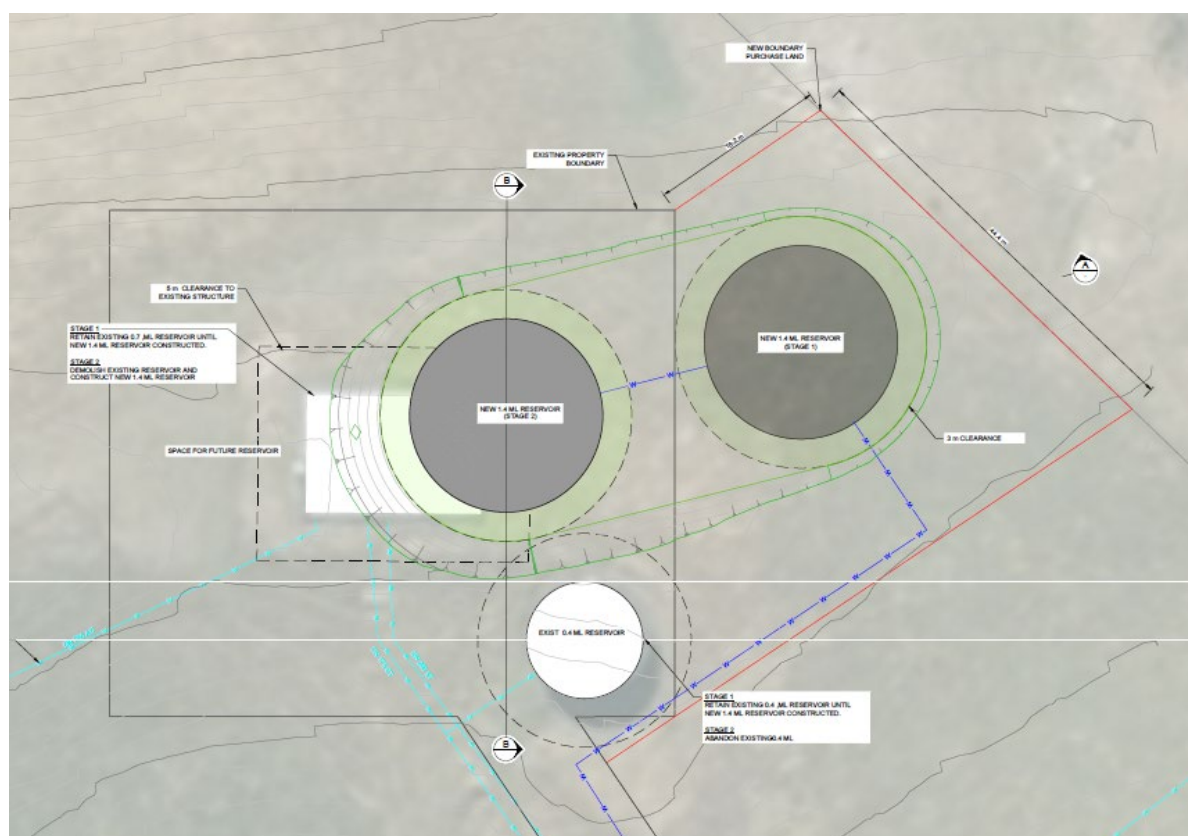


Figure 1: Outline of the reservoir replacement in Waipawa

#TheBigWastewaterStory programme has advanced over the last few months, with Stage Two of the Otane to Waipawa Wastewater Pipeline nearing completion. Stage Three is complete - linking the end of Stage 1 works at Racecourse Road/White Road to the Ōtāne Treatment Plant. The Ōtāne pump station was officially opened on 18 August.

Waveband repairs at the Waipukurau wastewater plant are complete and Waipawa repairs complete.

TRANCHE ONE – 3 WATERS REFORM PROGRAMME

Council identified a number of projects as part of the 3 Waters reform programme tranche one – below is a brief update on the programme –



Proudly Supported by
New Zealand Government
Te Kāwanatanga o Aotearoa

Officers are due to submit a closeout report in October 2022, to date just over \$10.7m of our \$11.09m has been spent and all of our projects within the programme are committed and planned to be delivered within timeframes. 2.

- **Regional 3 Waters** – work is underway with other councils to identify and understand private water supplies, as part of a private water supply identification regional project, which may include a contingency fund to assist private water supplies – another project in planning is to investigate work required to synergise a regional engineering code of practice to assist our supply partners working in Hawke's Bay.
- **Water Safety Planning** – source protection mapping and catchment risk assessment work is underway to support our water safety plans. A Sustainable Water Management Plan has been developed and [can be viewed here](#).
- **Otane to Waipawa Wastewater Pipeline** – completed and is now commissioned.
- **Waipukurau Second Water Supply** – Borefield is complete and Tikokino Road Stage 1 pipe replacement is complete, Stage 2 and 3 is completed. Stage 4 works will be carried out by the Civil & Pipeline Contractor Panel. Design has been completed with exception of pipe bridge crossing on Tikokino Road.
- **Wastewater Treatment Improvements** – DAF system is commissioned.
- **Wastewater Desludging** – Dry solids removal completed
- **Bylaw Reviews** – Updated bylaws were adopted on May 13 2021, work is underway on implementing the changes
- **Trade Waste** – Trade Waste consents underway and issued in Dec 2021, ongoing engagement and improvements.
- **Water Renewals** – a project to renew water mains is complete in Waipukurau across Nelson and Reservoir roads is completed. Stormwater in the vicinity was also completed.
- **Wastewater Renewals** – this fund is focussed on expediting our I&I programme, starting with physical works in Otane and studies in other towns – these studies are now well underway with quarter of the network investigated.
- **Programme Management** – a new project management software is now live and supporting the programme, and a 3 waters monitoring and wider infrastructure consent management tool is being rolled out to support operational compliance and visibility.
- **Kairakau Water Upgrade** – \$300k was reallocated to increase the budget and scope for Kairakau water upgrade, these works are well underway.



Figure 2: Kairakau Water System – Site Preparation

PGF ROADING PROGRAMME – PŌRANGAHAU TO WIMBLEDON

PHASE	DESIGN/ BUILD	
TIMELINE	JAN 2020 START DATE	AUGUST 2022 END DATE
PROGRESS	95%	
BUDGET	Total Budget \$20.1m Spend to Date: \$19.28m	
RISKS		

Scope

To upgrade Pōrangahau and Wimbledon Roads to improve safety and resilience along Pōrangahau Road from Waipukurau to the Tararua border on Wimbledon Road.

The Contractor

Stantec and Council have been delivering the design, procurement and contractor supervision of this significant programme of work.

We now have four different contractors onboard to deliver the main components of this programme, Concrete Structures, Fulton Hogan, Downer and Russell Roads.

Funded through the PGF by MBIE – the programme is well underway, and we can expect to see significant construction through to completion in August 2022.

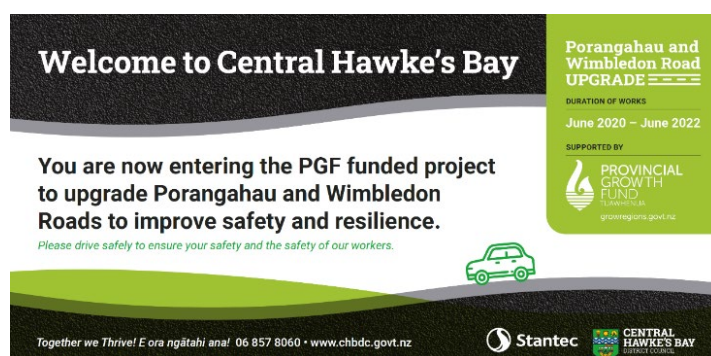
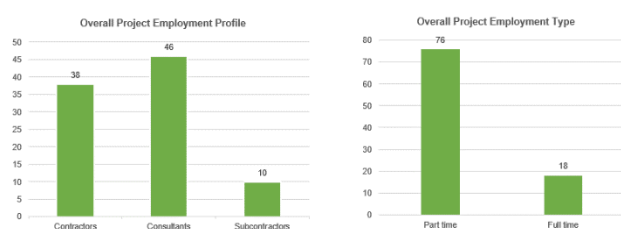
Communications

An interactive map has been created and can be visited here:

https://experience.arcgis.com/experience/947a211cafb4d4a96a063fcd1e8d3a461/page/page_10/

Webpages for the programme and individual projects can be found here: <https://www.chbdc.govt.nz/our-district/projects/porangahau-wimbledon-road-upgrade/>

Employment Statistics to Date



Progress Update

2022 has seen the programme ramp into action, with a significant amount of construction underway across the programme.

- 3 bridge sites are complete
- 2 sites at Flaxmill/ Wanstead, with consent granted.
- Lower Wimbledon Retreat underway and
- 3 other retaining wall sites complete
- Slow Vehicle Bay and Safety Improvements complete.

August 2022 has seen the project team push hard to the finish line, and at the end of August 2022, only tide up works remain as we demobilize crews from the remaining sites at Flaxmill with the Silt Removal and Lower Wimbledon Retreat.

The weather has played havoc in 2022, with a record number of wet rain days to contend with delaying the ability to build and seal roads. That said the contract teams have worked really hard to complete within the agreed programme.

In September 2022 we look forward to holding a celebration of the completion of this significant programme of works in Central Hawkes Bay that has seen 4 bridges strengthened, the Flaxmill area lifted and stream widened to build flood and road resilience, 8 sloe sites stabilized and strengthened, a nearly 500 meter section of road retreated, a new slow vehicle bay built and route wide safety improvements delivered.









We are extremely proud to be at the finish line, and CHBDC could never have completed the programme without our funding partner Kānoa and our project partners in Stantec, Downer, Russell Roads, Fulton Hogan, and Concrete Structures.

Over the coming months we will continue to release collateral and video content filmed and take stock of the outcomes delivered, but with nearly 200 individual workers employed by the programme over the last 2 years this has seen a significant economic boost for CHB outside the road constructed, and we look forward to releasing a short impact report in the coming months focusing on the outcomes.

C1098 – Retaining Walls (Lower Wimbledon Retreat): Cut faces have been hydroseeded. Kerb and channel has been poured and shaped between CH80 and CH350. Remaining kerb and channel to pour.



DISTRICT PLAN REVIEW

PHASE	Hearings underway	    
TIMELINE	AUG 2012 START DATE	March 2022 HEARINGS BEGIN
PROGRESS	80%	
BUDGET	Total Budget \$3.5m Spend to Date: \$2.7m	
RISKS		



Scope

The review has now progressed to the phase of undertaking the formal Resource Management Act statutory hearings. Submitters to the District Plan Review have the opportunity to formally submit their views on the topics contained within their written submissions to a Panel of Commissioners appointed by Council.

Progress Update

Five hearings have been undertaken this year. Hearing Stream 1 and 2 occurred during March, Hearing Stream 3 during June, Hearing Stream 4 in August, and Hearing Stream 5 in September. The topics covered were the Natural and Coastal Environment (hearing 1), the Urban Environment, Sustainability, and General District Wide Matters (hearing 2), the Rural Environment (hearing 3), Tangata Whenua and Historic Heritage Matters (hearing 4), and Risks and Hazards, Earthworks and Subdivision (hearing 5). There are only 2 more Hearing Streams scheduled until the end of the calendar year, which will mark the end of this part of the District Plan Review process.

Following each hearing the Panel releases a memorandum covering post-hearing activities to be undertaken by Council's reporting officers, experts and or submitters, to further inform the Panel's deliberations and decisions.

The Panel is expected to provide a Decisions-version of the Proposed District Plan once it has concluded its recommendations back to Council before May 2023.