

2. Community Outcomes

Purpose of Community Outcomes

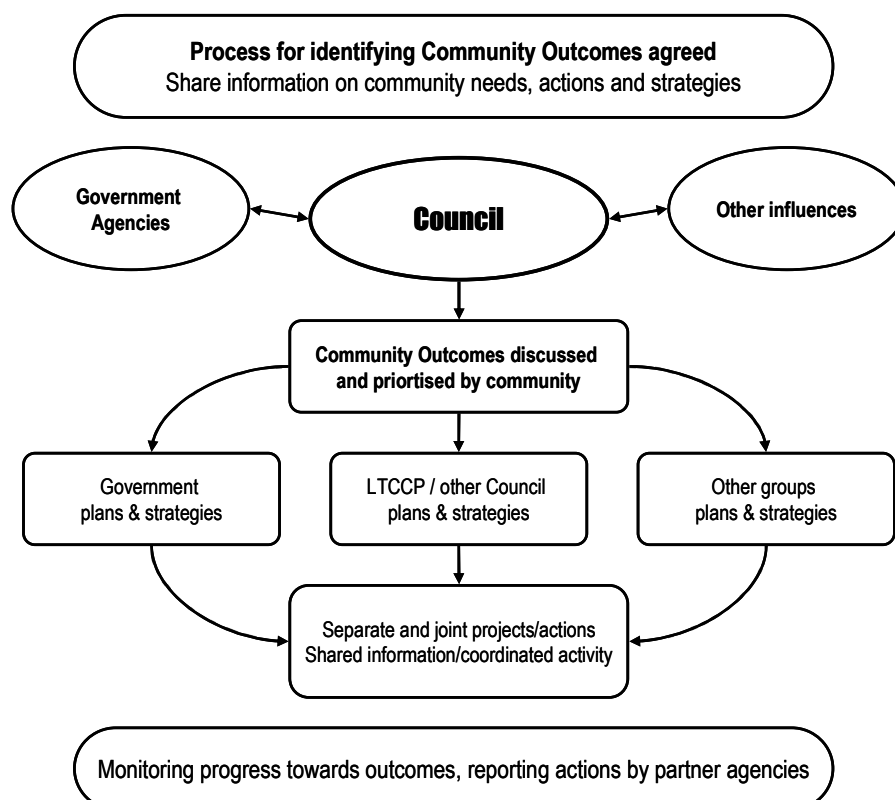
Community outcomes are a reflection of what is important to our local community. It is important to remember that these outcomes belong to the community – they are not only Council outcomes. The role of the Council is to give the community an opportunity to have their say in the future direction and well-being of Central Hawke's Bay.

Effective partnerships and collaboration between local government, central government, non government agencies, businesses and individuals will help our community work towards achieving its outcomes.

The purposes of the identification of community outcomes are:

- to provide opportunities for communities to discuss their desired outcomes in terms of the present and future social, economic, environmental, and cultural well-being of the community.
- to allow communities to discuss the relative importance and priorities of identified outcomes to the present and future social, economic, environmental, and cultural well-being of the community.
- to provide scope to measure progress towards the achievement of community outcomes.
- to promote the better co-ordination and application of community resources.
- to inform and guide the setting of priorities in relation to the activities of the local authority and other organisations.

Community outcomes provide a means for people and organisations in the district/city/region to help identify and prioritise needs for that area. They can provide a structure for activities at a local level, and joint initiatives or resource use. The following diagram indicates how different parties can fit into the process.



What are our Community Outcomes?

Our Community Outcomes were formulated on a regional and collective basis and are –

A lifetime of good health and wellbeing

An environment in which all people are able to achieve a lifetime of good health and wellbeing. They are protected from the negative effects of pollution, drug and alcohol abuse and illness.

An environment that is appreciated, protected and sustained for future generations

Communities respecting the importance of our natural environment and working towards sustaining this for the wellbeing of future generations.

Safe and secure communities

Central Government, Local Government and the community working together to create an environment which is safe for all people in our region.

Transport infrastructure and services that are safe, effective and integrated.

A safe and affordable public transport system that meets the needs of the people in our region.

A strong, prosperous and thriving economy

Central Government, Local Government and individuals working more effectively to create conditions that promote economic growth.

Strong regional leadership and a sense of belonging

Co-ordinated regional leadership to achieve economic social cultural and environmental wellbeing of our communities. A democratic environment where all people are able to participate in the life of their communities and achieve a sense of belonging.

Supportive, caring and inclusive communities

Caring communities where people feel respected and valued as important members of our region. They are able to access resources to reach their full potential in life and participate towards achieving strong communities.

Communities that value and promote their unique culture and heritage

Communities recognising, achieving and promoting their cultural goals. Acknowledging and protecting places of significance to pass to future generations. Communities respecting and embracing the cultural environment of Ngati Kahungunu.

Safe and accessible recreational facilities to enhance healthy lifestyles by promoting physical exercise

A co-ordinated regional approach where all people are able to access safe recreational facilities in our region.

What do we mean by Well-being?

The Local Government Act 2002 often refers to social, economic, environmental and cultural well-being but does not define what each of the four well-beings mean. It is up to each Council to come to its own understanding of what these mean and the Community Outcomes process is the ideal means to do this. Because action in one well-being is likely to impact on the others, we must seek to balance and prioritise well-beings. Traditionally, economic benefits have been the main factor in decision-making but experience has shown that with some innovation and experimentation we can achieve economically positive outcomes that offer environmental, cultural and/or social benefits.

Social Well-being

Social well-being can be described as those aspects of life that we care about as a society, those that are important for a person's happiness, quality of life and welfare. Council's role in assisting social well-being has traditionally been minor, leaving this area to central government and community organisations, reflecting Council's focus on asset management and the community's desire for small government. Council has a passive role as a trustworthy mechanism to regulate and arbitrate people's rights in respect of each other and provide a means for people to enjoy constructive relationships with others in the community. However, active roles in promoting social well-being include providing retirement housing and providing grants to community groups.

Economic Well-being

Economic well-being could be defined as having a well-performing economy that provides us with a sustainable income base to support, into the future, higher living standards. Our long-term economic performance relies on higher levels of quality growth. In this District, the emphasis has been mainly on leaving the rural sector alone to maximise its efficiency and minimise compliance costs. Council may influence economic well-being through regulating the allowable use of land through the District Plan; the provision of infrastructure; building consent procedures and conditions placed on noise or emissions of local manufacturers; rating policies and the use of rating tools for different types of activities. Council also supports regional and district promotion, economic development and tourism groups to assist with organising economic development activity. These organisations form a "bridge" between council, business, central government and the community, facilitating economic activity.

Environmental Well-being

While most people have views about what is right and wrong in their environment and how to fix them, Council needs to focus on identifying the ideal characteristics of the environment and how to achieve them. The Council has a significant statutory role in assisting environmental well-being through the Resource Management Act 1991 by regulating the effects of human development to protect the life-supporting capacity of air, water, soils and ecosystems. The Council and the community decide how to protect the environment using rules in the District Plan. Council also ensures the natural and built environment in which people live is clean, healthy and beautiful and that all people are able to access natural areas and public spaces.

Cultural Well-being

This is the vitality that communities and individuals enjoy through participation in recreation, creative and cultural activities, and the freedom to retain, interpret and express their arts, history, heritage and traditions. Council assists to build this vitality by providing the community with the ability to access libraries, archives and museums, supporting community creative and cultural activities, integrating art and culture with other Council activities such as infrastructural development, promoting arts and culture as a key part of the local economy, taking a proactive stance of heritage protection, providing sports and recreation facilities, and having regard for the natural and physical environment when designing public spaces and infrastructure. The issue is how to find ways to balance cultural well-being against other interests and the best way to do this is to integrate cultural wellbeing into the broad range of Council activities and initiatives.



▲ The Waipukurau bus shelter created by Hawke's Bay artist Ricks Terstappen (left), a good example of the integration of art and infrastructure.

How our Community Outcomes were Identified

A regional approach to community outcomes

Five Hawke's Bay Councils - Hastings District Council, Napier City Council, Central Hawke's Bay District Council, Wairoa District Council and the Hawke's Bay Regional Council made a decision to take a regional approach and work collectively together with the community to identify community outcomes and determine a long term vision for the future of our region. A rigorous and comprehensive mix of consultation was undertaken between July 2003 and March 2004 to identify the nine community outcomes.

Stakeholder engagement

Face to face meetings were held with 17 key stakeholders in our community. Stakeholders included WINZ, Police, Department of Conservation, Te Puni Kokiri, the Hawke's Bay District Health Board, Port of Napier, Hawke's Bay Tourism, NZ Fruit Growers Federation, Federated Farmers, EIT, Hawke's Bay Chamber of Commerce, Hawke's Bay Economic Development Agency and (the then) Transit New Zealand.

Hui were also held with Ngati Kahungunu Iwi Incorporated, Te Taiwhenua O Heretaunga, Te Taiwhenua O Tamatea, Te Taiwhenua O Te Whanganui A Orotu, Wairoa Taiwhenua and Kahungunu Executive and Councils' Maori Advisory and Maori Standing Committees.

Fifty further stakeholders were contacted by way of letter requesting written information on the role and responsibilities of their bodies and seeking any further documents that may be relevant to identifying community outcomes. These included Ministry of Housing, Accident Compensation Corporation, Ministry of Economic Development, Department of Labour, Pan Pac, Building Industry Authority, Retailer Groups, Sport Hawke's Bay, Grey Power, Residents and Ratepayer Groups, Anglican Care and the Hawke's Bay Cultural Trust.

Community engagement – "A Better Hawke's Bay Have Your Say"

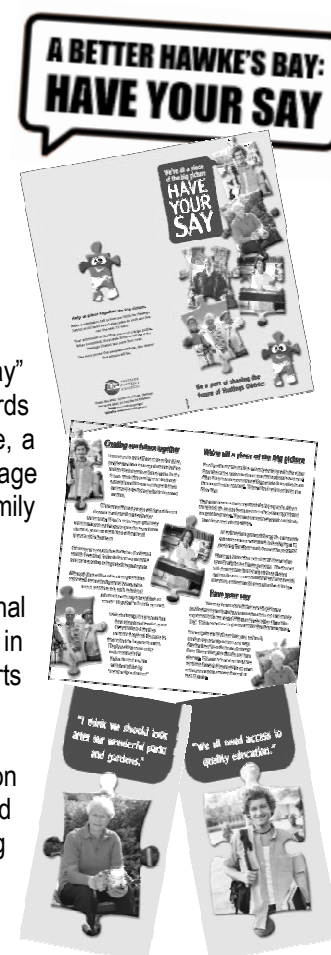
A high profile four week media campaign – "A Better Hawke's Bay Have Your Say" was launched. The campaign asked all Hawke's Bay residents to "tell us in 50 words or less how Hawke's Bay can be an even better place to live in". As an incentive, a \$1,000 prize package 'win the best of Hawke's Bay' was offered. The package consisted of choosing one of three Hawke's Bay based prize options – a family adventure, a foodies dream, or a romantic retreat.

All households in our region received a copy of the submission form via the Regional Council's magazine – *The Big Picture*. Further submission forms were available in libraries, community centres, information centres, Council buildings, shops and sports stadiums.

The Hawke's Bay regional newspaper Hawke's Bay Today, produced updates on public submissions during the four week consultation period. A display was erected at the Hawke's Bay A & P Show with submission forms and information regarding community outcomes available to the public. Information was also available on the Hastings District and Napier City Councils' websites, and other Council publications were also used to encourage public participation.

Youth throughout the region were video interviewed during the school holidays on how they thought Hawke's Bay could be an even better place to live and what they liked about living in their communities.

A telephone survey of 500 respondents provided an insight into community thinking and showed levels of satisfaction with services provided, and natural features of our region. It was a snapshot study with a margin of error + or – 4.38% to a 95% level of confidence. The sample has an equivalent ratio of Males 50%: Females 50%, 60% urban/town addresses and 40% rural. The number of respondents interviewed from each district was in proportion to their respective population figures.



Prioritisation of Outcomes

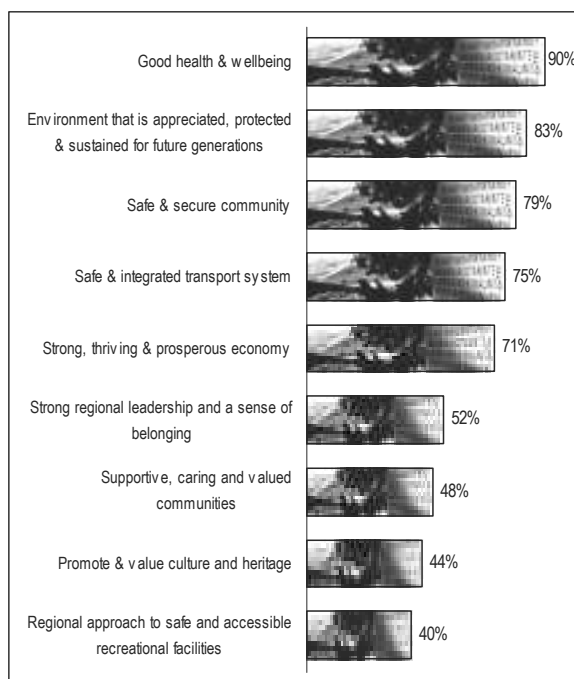
Council is required to give the community an opportunity to prioritise the nine community outcomes. In order to ensure we reached a good cross section of the community a telephone survey was conducted with 500 residents throughout our region. This gave a margin of error of plus or minus 4.38% to a level of 95% confidence.

Respondents were asked to rate each outcome from “very important”, “quite important”, “just important”, “not very important” to “not at all important”.

Health and well-being were considered by residents to be extremely important. Many saw good health being synonymous with quality of life, while others believe healthy communities are necessary for a strong economy. Residents wanted to see financial resources directed at reducing hospital waiting lists and improving emergency services.

Residents told us that safe and secure communities require more policing, tougher sentences for offenders, more employment opportunities and extended victim support.

Environmental protection is very important to ensure Hawke’s Bay remains an attractive place to work and live. Many residents want planning controls to limit development.



The community outcomes rated least important were “the council provision of safe and recreational facilities” and “promoting culture and heritage”

Our Community Outcomes

A Lifetime of Good Health and Well-being

An environment in which all people are able to achieve a lifetime of good health and well-being. They are protected from the negative effects of pollution, drug and alcohol abuse and illness. They have confidence in and access to health care provided in our region.

Stakeholders

Stakeholders told Council that clean quality water and effective waste disposal were essential for Hawke's Bay. Issues such as child health, improving the health status of Maori, reducing avoidable hospitalisations, and decreasing the prevalence and impact of mental illness are seen as important issues for stakeholders.

Public

A large number of people called for access to clear water and clean air, along with a reduction in sprays used in crops. Upgrading sewage systems was also important to many residents. Drug use, in particular pure methamphetamine or 'P', was a major concern for the community, and to a lesser extent alcohol abuse. People also want good access to health services, especially in rural communities like Central Hawke's Bay and Wairoa.

Tangata Whenua

Similarly, tangata whenua see water as a premium resource and they have concerns over its quality in our region. Consultation also indicated polluted waterways need to be cleaned along with improving the disposal of effluent. Taking health services into people's homes and increased resources for public health nurses were also key issues.

How we will work together to ensure a life time of good health and well-being

Council recognises that healthy residents have a positive impact on the social and economic well-being of our region. We are committed to working closely with organisations to ensure that people can live and work in an environment which is clean, healthy and safe. Organisations that we will continue to work closely with include:

- Hawke's Bay District Health Board
- Police
- Environmental and Residents Groups
- Hawke's Bay Fruit Growers Association
- Federeated Farmers
- Ngati Kahungunu
- Other Hawke's Bay Councils

Measuring our progress

The following measures will be used to assess our progress:

- Levels of air and water quality. Source: *Hawke's Bay Regional Council*
- Drug and alcohol use. Source: *Hawke's Bay District Health Board, New Zealand Police Statistics*
- Development of sewerage facilities and services. Source: *Local Government*
- Residents level of satisfaction with health services and professionals in community. Source: *Hawke's Bay Regional Satisfaction Survey*
- Number and type of hospital admissions Source: *Hawke's Bay District Health Board*

An Environment that is sustained for Future Generations

Communities respecting the importance of our natural environment and working towards sustaining this for the well-being of future generations.

Stakeholders

Consultation with stakeholders indicated that they felt people needed to be more informed and educated on conservation in our region. They urged Council to ensure, both as they develop policies and plans as well as during resource consents procedures, to have regard for our natural environment.

Public

A very large number of residents had concerns regarding littering and pollution in our communities. Many more wanted better recycling facilities. There were strong calls for increased tree planting and a halt to further building development.

Tangata Whenua

Tangata Whenua told Council they wanted waterways protected, land to be managed in a more sustainable way, sprays to cease and extraction of shingle from the rivers halted. They saw re-stocking, re-seeding, re-vegetation of native flora, fauna and fisheries as very important to protecting our environment.

How we will work together to ensure our environment is appreciated, protected and sustained for future generations

Council believes that our unique environment should be protected and sustained for all people to enjoy. We will work effectively across a broad range of organisations to ensure this outcome is achieved. Specifically we will work closely with:

- Ngati Kahungunu
- Department of Conservation
- Eastern Regional Rural Fire Committee
- Federated Farmers
- Hawke's Bay Tourism
- Forest and Bird Protection Society
- Other Hawke's Bay Councils
- Residents and Ratepayer Groups

Measuring our progress

The following measures will be used to assess the community's progress:

- State of the Environment Report - Monitors the overall state of the local physical environment (groundwater/surface water/coastline/air quality/land-soils/natural hazards/built environment) Source: *Hawke's Bay Regional Council*
- Residents level of satisfaction with natural features around their community (beaches, tracks, wetlands, mountains) Source: *Hawke's Bay Regional Satisfaction Survey*
- Residents level of concern with noise, air or general pollution in their community Source: *Hawke's Bay Regional Satisfaction Survey*
- Trend in tonnage of recyclables collected Source: *Central Hawke's Bay District Council*
- Trend in tonnage of refuse disposed to landfill Source: *Central Hawke's Bay District Council*

Safe and Secure Communities

Central Government, Local Government and the community working together to create an environment which is safe for all people in our region.

Stakeholders

Reducing levels of violence, including family violence and keeping our children safe, were identified by stakeholders as important for our region. They also indicated that lowering levels of burglary, organised criminal activity, traffic offending and youth crime was essential to creating a safe region.

Public

Similarly, public consultation indicated less crime, less domestic violence, less youth crime and tougher sentences were important issues in our community. There were strong calls for police numbers to be increased, with a particular focus on community policing. A large number of people wanted more resources for road safety skills and fire awareness. Calls for safer playgrounds and four wheel motorbikes to be banned on beaches were also strong.

Tangata whenua

Family safety through the elimination of child and domestic violence was a key concern for tangata whenua.

How we will work together to achieve safe and secure communities

Ensuring safe and secure communities for our residents is important to Council. We are committed to working effectively with other organisations to ensure that our residents are protected from the negative effects of criminal activity. We believe all people have a right to feel safe in their communities and to achieve this we will continue to work closely with:

- Police
- Safer Community Councils
- Neighbourhood Support
- Child Youth and Family
- Ngati Kahungunu
- CBD businesses
- Other Hawke's Bay Councils
- Housing New Zealand Corporation

Measuring our progress

The following measures will be used to assess our progress:

- Reported crime statistics *Source: New Zealand Police*
- Youth offending statistics *Source: New Zealand Police*
- Number of police in District *Source: New Zealand Police*
- How safe do you feel in your community? *Source: Hawke's Bay Regional Satisfaction Survey*

Transport Infrastructure and Services that are Safe, Effective and Integrated

A safe and affordable transport system that meets the needs of the people in our region.

Stakeholders

Consultation indicated that stakeholders wanted a regional integrated transport system with efficient transport linkages to the Port by road and rail. They also called for a transport system that supports national and regional economic development.

Public

Members of our community told Council they wanted a transport system that was inclusive, accessible and affordable to all users. Better public transport was a big issue along with ensuring that our roads are kept safe at all times.

Tangata whenua

Tangata whenua called for more affordable public transport and better transport services to health professionals

How we will work together towards achieving transport infrastructure and services that are safe, effective and integrated

An integrated and effective transport infrastructure is vital to strong economic well-being in our region. Council will continue to work in partnership with the New Zealand Transport Agency (NZTA) to determine a strategic transportation network for the next 25 years.

Maintain a strong relationship with Road Safe HB to reduce road fatalities.

Council will continue to work closely with the NZTA and the New Zealand Police.

Work with other Hawke's Bay Councils.

Measuring our progress

The following measures will be used to assess our progress.

- Number and type of road accidents – *Source: NZ Police and Land Transport New Zealand*
- Number and quality of road improvements – *Source: Transit NZ*
- 100% compliance with Land Transport New Zealand audits – *Source: Central Hawke's Bay District Council*

A Strong, Prosperous and Thriving Economy

Central Government, Local Government and individuals working more effectively to create conditions that promote economic growth.

Stakeholders

Submissions from stakeholders centred around promoting economic growth, growing the population, creating more jobs, reducing business compliance costs, attracting and retaining skilled people, protecting the rural and horticultural base and encouraging its development.

Public

Public called for more support for local businesses through tax breaks, and greater job opportunities, particularly apprenticeship schemes. They also called for additional restaurants and café's to be built in our inner shopping centres. There was a strong push for more tourism by increasing the use of food, wine and sun as marketing tools to attract more visitors to our region.

Tangata whenua

Full employment for Maori, local people to be employed locally and the need for more apprenticeships were issues identified by tangata whenua. Incentives for Maori to stay at school to reduce the truancy problem in our region was an issue that they felt needed some immediate attention.

How we will work collectively together to achieve a strong prosperous and thriving economy

Council has established an effective working partnership with the Hawke's Bay Economic Development Agency (EDA). The EDA fosters and encourages economic growth in our region and acts as a conduit for Central Government funding. This partnership also enables Councils to have regular interaction with the business community.

Hawke's Bay Inc is a new initiative which will merge the Hawke's Bay EDA and Hawke's Bay Tourism into one entity and then integrate all the various Council driven economic development and tourism promotion activities into this single organisation. This will be collaboration between all Hawke's Bay TLAs and the private sector.

Councils will continue to work closely with retailer groups to promote central business districts throughout our region.

Measuring our progress

The following measures will be used to assess our progress:

- Rate of population increase – *Source: Statistics New Zealand Census Data*
- Growth in rating base – *Source: Valuation Reports*
- Employment and unemployment rates – *Source: Statistics New Zealand*
- Economic Growth and Activity Growth – *Source: National Bank Regional Trends*
- Tourism Activity – *Source: Hawke's Bay Tourism Statistics*

Strong Regional Leadership and a Sense of Belonging

Co-ordinated regional leadership to achieve economic, social, cultural and environmental well-being of our communities. A democratic environment where all people are able to participate in the life of their communities and achieve a sense of belonging.

Stakeholders

There was a strong call from stakeholders to simplify the governance systems and operations of the region by amalgamating Councils to one unitary authority. Many thought that co-operation, collaboration and alignment of strategic direction would be of great benefit to Hawke's Bay.

Public

Residents also called for one Council. This varied amongst the submitters as to whether that just meant Napier and Hastings, or the entire Hawke's Bay region. People voiced a desire to be more involved in Local Government decision making and wanted to have a better relationship with Councils.

Tangata Whenua

Consultation with tangata whenua indicated that they would like to participate more in their communities through better representation at a Local Government level. They want to and are ready to work constructively with Councils to improve partnerships with Local Government.

How we will work together towards achieving strong regional leadership and a sense of belonging

Mayoral forums and Chief Executive meetings are held regularly and provide an opportunity for information sharing, relationship building and discussion of regional initiatives. Councils have in place triennial agreement protocols and systems about how they function together at a regional level. Collectively they work together on a variety of projects such as:

- Hawke's Bay Airport
- Hawke's Bay Tourism
- Landfill and recycling
- Power of One
- Economic Development Agency
- Pettigrew Green Arena
- Regional Community Outcomes

Hawke's Bay Inc is a new initiative which will merge the current Hawke's Bay EDA and Hawke's Bay Tourism organisations into one entity and then integrate Council driven economic development and tourism promotion activities into a single organisation. This new development organisation will be a collaboration between all Hawke's Bay Councils and the private sector and will for the first time have a truly regional focus and involvement.

Measuring our progress

The following measures are used to assess our progress:

- Number and type of Local Government regional projects *Source: Local Government*
- Residents level of satisfaction with their Council *Source: Hawke's Bay Regional Satisfaction Survey*
- Level of voter turn out at Local Body elections *Source: Electoral Officer*

Supportive, Caring and Inclusive Communities

Caring communities where people feel respected and valued as important members of our region. They are able to access resources to reach their full potential in life and participate towards achieving strong communities.

Stakeholders

Having a more coordinated approach towards health, family health and welfare, housing, employment and the provision of social services is important to stakeholders in our region.

Public

Consultation with residents indicated that they wanted more social service assistance, more support for families, improved community spirit and more tolerance and respect towards each other in our communities.

Tangata Whenua

Tangata whenua called for improved housing for Maori, and assistance to develop Maori and help with the upkeep of Marae. Having thriving communities where all their people can fully participate is a key goal for Ngati Kahungunu.

How we will work together towards achieving supportive, caring and inclusive communities

Strong communities are integral to the social well-being of our society. Council believes that allowing all people to reach their full potential and participate in our communities will enrich the social fabric of our region. We will work closely with the following groups to achieve this outcome:

- Police
- Ministry of Social Development
- Housing New Zealand Corporation
- Department of Courts
- Neighbourhood Support Groups
- Ngati Kahungunu
- Te Puni Kokiri
- Ministry of Pacific Island Affairs
- Hawke's Bay District Health Board
- Other Councils in Hawke's Bay

Measuring our progress

The following measures will be used to assess our progress:

- Number of new partnerships between Council and key providers – *Source: Council*
- Percentage of residents who feel supported and included in their community - *Source: Hawke's Bay Regional Satisfaction Survey*

Communities that Value and Promote their Unique Culture and Heritage

Communities recognising, achieving and promoting their cultural goals. Acknowledging and protecting places of significance to pass to future generations. Communities respecting and embracing the cultural environment of Ngati Kahungunu.

Stakeholders

Stakeholders told Council they wanted the physical assets and heritage of our communities identified, and development and preservation of places of significant character encouraged, for the enjoyment and benefit of all residents. They also felt it was important to strike a balance between protecting significant sites and interpreting and facilitating public access to them.

Public

Members of the public asked for all cultures to be recognised and embraced throughout our region. People also wanted more art exhibitions and murals to be displayed by artists from our region.

Tangata Whenua

Consultation showed tangata whenua wanted Maori language and culture to be promoted and respected. They told Council that correct pronunciation of their language, and a greater understanding of their customs and heritage would lead to better working relationships. There were strong calls from tangata whenua to establish a Kahungunu cultural centre and to protect places of significance in the region.

How we will work together to achieve communities that value and promote their unique culture and heritage

Council believes that our unique culture and heritage must be encouraged and supported at all times and will work closely with the following organisations to achieve this outcome:

- Ngati Kahungunu
- Hawke's Bay Cultural Trust
- NZ Historic Places Trust
- QE II National Trust
- CHB Promotions
- Norsewear Art
- Churches
- Other Hawke's Bay Councils

Council will continue to maintain and strengthen relationships and partnerships with Ngati Kahungunu. The Maori Consultative Committee also provide Council and Iwi with an opportunity for relationship building dialogue.

Measuring our progress

The following measures will be used to assess our progress:

- CHB Early Settler's Museum and Civic Theatre attendance numbers and exhibitions – *Source: Museum and Civic Theatre records*
- Development of Maori cultural facilities and services – *Source: Ngati Kahungunu, Councils', Hawke's Bay Tourism, Eastern Institute of Technology.*
- Percentage of respondents that have undertaken one of more cultural activities in the previous four weeks – *Source: Ministry of Culture and Heritage/Statistics NZ survey*
- Percentage of total employed Hawke's Bay people employed in cultural occupations and industries – *Source: Ministry of Culture and Heritage/Statistics NZ survey*
- Percentage of respondents that have undertaken one or more Taonga Tuku Iho activities in the previous four weeks - *Source: Ministry of Culture and Heritage/Statistics NZ survey*

Safe and Accessible Recreational Facilities

A co-ordinated regional approach where all people are able to access safe recreational facilities in our region.

Stakeholders

Ensuring there are equal opportunities for everyone to experience recreational facilities was a key issue for stakeholders. Many suggested that a co-ordinated approach to providing sports facilities and services throughout Hawke's Bay was essential for our region.

Public

The provision of recreational facilities was the most popular outcome from our residents. A large number of people requested a beach for Napier, the location varied between Marine Parade, Ahuriri and Westshore. Equally people requested cycle tracks and walkways to be built from Tongoio to Te Awanga. Others requested more parks, facilities for youth, places for families to visit, discounts at Splash Planet and more family events. Many people saw the Councils working together towards achieving this outcome.

How we will work together to achieve safe and accessible recreational facilities

Provision and maintenance of safe and accessible recreational facilities is a key focus for Council. The Central Hawkes Bay District Council will work together with other Councils in the region on projects like developing pathways and cycleways throughout our region and the Regional Council has contributed to funding for the AW Parsons Stadium.

All Councils will continue to work closely with Sport Hawke's Bay by establishing a regional sport and active living strategy and developing new initiatives for the future. This will also include the development of a regional facilities blueprint for Hawke's Bay's sporting infrastructure.

Measuring our progress

The following measures will be used to assess our progress:

- Monitoring the number and type of regional recreational facilities *Source: Local Government*
- Number of new recreational facilities developed *Source: Local Government*
- Implementation of Sport Hawke's Bay's new regional sport and active living strategy *Source: Sport Hawke's Bay.*

Obligation to Review our Community Outcomes

A local authority must, not less than once every 6 years, carry out a process to identify community outcomes for the intermediate and long term future of our District.

A review of our Community Outcomes is therefore intended in 2010.

Obligation to Report against Community Outcomes

Council is required to monitor and report, at least once every three years, on the progress made in achieving our community outcomes.

CHB has combined with the four other Hawke's Bay Councils - Hastings District Council, Napier City Council, Wairoa District Council and the Hawke's Bay Regional Council, to survey our communities and prepare a *Community Outcomes Monitoring report*.

Copies of this report are available on request.